



Datasheet for ABIN7235823  
**anti-ALS2CR11 antibody**



[Go to Product page](#)

1 Image

Overview

Quantity:	200 µL
Target:	ALS2CR11
Reactivity:	Human, Mouse
Host:	Rabbit
Clonality:	Polyclonal
Conjugate:	This ALS2CR11 antibody is un-conjugated
Application:	ELISA, Western Blotting (WB)

Product Details

Immunogen:	Recombinant protein of human ALS2CR11
Isotype:	IgG
Characteristics:	Polyclonal Antibody
Purification:	Affinity purification

Target Details

Target:	ALS2CR11
Alternative Name:	ALS2CR11 ( <a href="#">ALS2CR11 Products</a> )
Background:	This gene has highly expression in digestive system component and liver, biliary system. It may have four isoforms that produced by alternative splicing. Transcription profiling of human mesenchymal stem cells transformed with lentiviral vectors of TERT, E6, SV40 and RAS.

## Target Details

Molecular Weight: 71 kDa

UniProt: [Q53TS8](#)

## Application Details

Application Notes: WB 1:200-1:1000

Restrictions: For Research Use only

## Handling

Format: Liquid

Concentration: 0.1 mg/mL

Buffer: PBS with 0.05 % sodium azide and 50 % glycerol, PH7.4

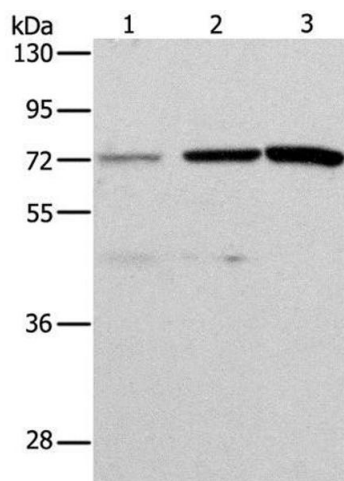
Preservative: Sodium azide

Precaution of Use: This product contains Sodium azide: a POISONOUS AND HAZARDOUS SUBSTANCE which should be handled by trained staff only.

Storage: -20 °C

Storage Comment: Store at -20°C. Avoid freeze / thaw cycles.

## Images



### Western Blotting

**Image 1.** Western Blot analysis of HeLa and SKOV3 cell, Mouse liver tissue using ALS2CR11 Polyclonal Antibody at dilution of 1:500