

Datasheet for ABIN7235997

anti-CDH6 antibody**2** Images[Go to Product page](#)

Overview

Quantity:	200 µL
Target:	CDH6
Reactivity:	Human, Mouse, Rat
Host:	Rabbit
Clonality:	Polyclonal
Conjugate:	This CDH6 antibody is un-conjugated
Application:	Western Blotting (WB), ELISA, Immunohistochemistry (IHC)

Product Details

Immunogen:	Recombinant protein of human CDH6
Isotype:	IgG
Characteristics:	Polyclonal Antibody
Purification:	Affinity purification

Target Details

Target:	CDH6
Alternative Name:	K-Cadherin (CDH6 Products)
Background:	This gene encodes a member of the cadherin superfamily. Cadherins are membrane glycoproteins that mediate homophilic cell-cell adhesion and play critical roles in cell differentiation and morphogenesis. The encoded protein is a type II cadherin and may play a role in kidney development as well as endometrium and placenta formation. Decreased

Target Details

expression of this gene may be associated with tumor growth and metastasis.

Molecular Weight: 88 kDa

UniProt: [P55285](#)

Pathways: [Cell-Cell Junction Organization](#)

Application Details

Application Notes: WB 1:500-1:2000, IHC 1:50-1:200

Restrictions: For Research Use only

Handling

Format: Liquid

Concentration: 0.4 mg/mL

Buffer: PBS with 0.05 % sodium azide and 50 % glycerol, PH7.4

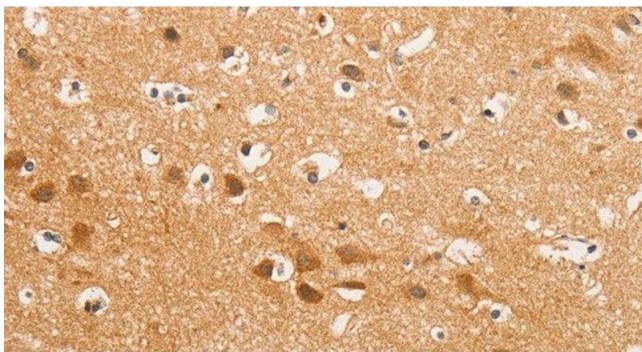
Preservative: Sodium azide

Precaution of Use: This product contains Sodium azide: a POISONOUS AND HAZARDOUS SUBSTANCE which should be handled by trained staff only.

Storage: -20 °C

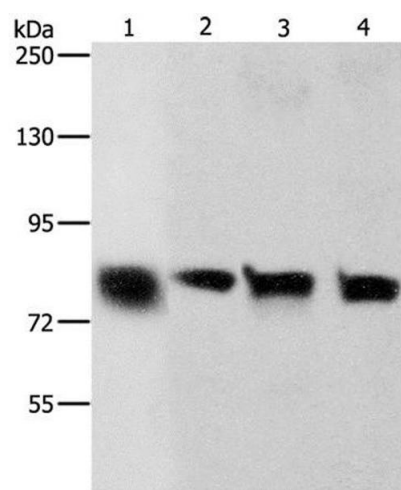
Storage Comment: Store at -20°C. Avoid freeze / thaw cycles.

Images



Immunohistochemistry (Paraffin-embedded Sections)

Image 1. Immunohistochemistry of paraffin-embedded Human brain using K-Cadherin Polyclonal Antibody at dilution of 1:50



Western Blotting

Image 2. Western Blot analysis of Hela and A549 cell, Human liver cancer tissue and HT-29 cell using K-Cadherin Polyclonal Antibody at dilution of 1:500