

Datasheet for ABIN7236070

**anti-MAP4K2 antibody**[Go to Product page](#)**1** Image

## Overview

Quantity:	200 µL
Target:	MAP4K2
Reactivity:	Human, Mouse
Host:	Rabbit
Clonality:	Polyclonal
Application:	Western Blotting (WB), ELISA

## Product Details

Immunogen:	Recombinant protein of human MAP4K2
Isotype:	IgG
Characteristics:	Polyclonal Antibody
Purification:	Affinity purification

## Target Details

Target:	MAP4K2
Alternative Name:	MAP4K2 ( <a href="#">MAP4K2 Products</a> )
Background:	<p>The protein encoded by this gene is a member of the serine/threonine protein kinase family. Although this kinase is found in many tissues, its expression in lymphoid follicles is restricted to the cells of germinal centre, where it may participate in B-cell differentiation. This kinase can be activated by TNF-alpha, and has been shown to specifically activate MAP kinases. This kinase is also found to interact with TNF receptor-associated factor 2 (TRAF2), which is involved in the</p>

## Target Details

activation of MAP3K1/MEKK1.

Molecular Weight: 92 kDa

UniProt: [Q12851](#)

## Application Details

Application Notes: WB 1:1000-1:5000

Restrictions: For Research Use only

## Handling

Format: Liquid

Concentration: 0.3 mg/mL

Buffer: PBS with 0.05 % sodium azide and 50 % glycerol, PH7.4

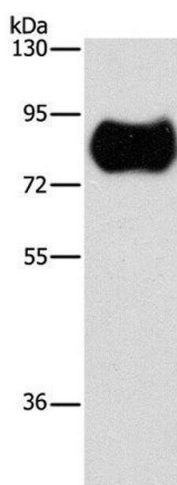
Preservative: Sodium azide

Precaution of Use: This product contains Sodium azide: a POISONOUS AND HAZARDOUS SUBSTANCE which should be handled by trained staff only.

Storage: -20 °C

Storage Comment: Store at -20°C. Avoid freeze / thaw cycles.

## Images



### Western Blotting

**Image 1.** Western Blot analysis of Human fetal brain tissue using MAP4K2 Polyclonal Antibody at dilution of 1:900