



[Go to Product page](#)

Datasheet for ABIN7236087  
**anti-RICTOR antibody**

2 Images

Overview

Quantity:	200 µL
Target:	RICTOR
Reactivity:	Human, Mouse
Host:	Rabbit
Clonality:	Polyclonal
Conjugate:	This RICTOR antibody is un-conjugated
Application:	Immunohistochemistry (IHC), ELISA

Product Details

Immunogen:	Recombinant protein of human RICTOR
Isotype:	IgG
Characteristics:	Polyclonal Antibody
Purification:	Affinity purification

Target Details

Target:	RICTOR
Alternative Name:	RICTOR ( <a href="#">RICTOR Products</a> )
Background:	Rapamycin-insensitive companion of mTOR is a protein that in humans is encoded by the RICTOR gene. RICTOR and MTOR are components of a protein complex that integrates nutrient- and growth factor-derived signals to regulate cell growth. Subunit of mTORC2, which regulates cell growth and survival in response to hormonal signals. mTORC2 is activated by

## Target Details

---

growth factors, but, in contrast to mTORC1, seems to be nutrient-insensitive. mTORC2 seems to function upstream of Rho GTPases to regulate the actin cytoskeleton, probably by activating one or more Rho-type guanine nucleotide exchange factors.

UniProt: [Q6R327](#)

Pathways: [Fc-epsilon Receptor Signaling Pathway](#), [EGFR Signaling Pathway](#), [Neurotrophin Signaling Pathway](#), [Regulation of Actin Filament Polymerization](#), [CXCR4-mediated Signaling Events](#)

## Application Details

---

Application Notes: IHC 1:25-1:200

Restrictions: For Research Use only

## Handling

---

Format: Liquid

Concentration: 0.3 mg/mL

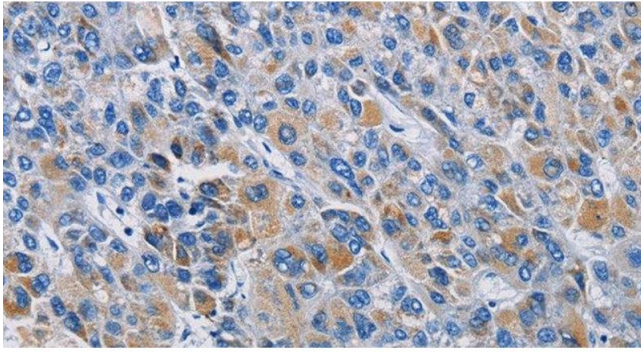
Buffer: PBS with 0.05 % sodium azide and 50 % glycerol, PH7.4

Preservative: Sodium azide

Precaution of Use: This product contains Sodium azide: a POISONOUS AND HAZARDOUS SUBSTANCE which should be handled by trained staff only.

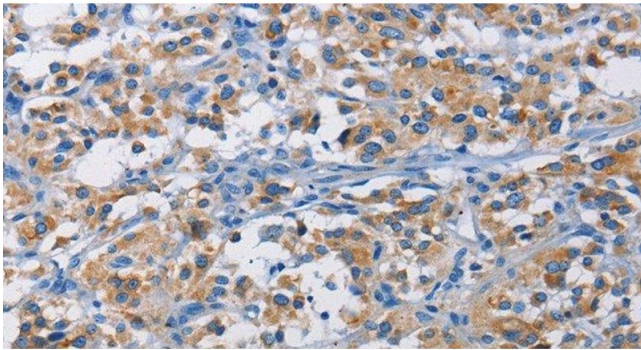
Storage: -20 °C

Storage Comment: Store at -20°C. Avoid freeze / thaw cycles.



#### Immunohistochemistry (Paraffin-embedded Sections)

**Image 1.** Immunohistochemistry of paraffin-embedded Human liver cancer tissue using RICTOR Polyclonal Antibody at dilution 1:50



#### Immunohistochemistry (Paraffin-embedded Sections)

**Image 2.** Immunohistochemistry of paraffin-embedded Human thyroid cancer tissue using RICTOR Polyclonal Antibody at dilution 1:50