



## Datasheet for ABIN7236111 anti-YARS2 antibody



[Go to Product page](#)

### 2 Images

#### Overview

Quantity:	200 µL
Target:	YARS2
Reactivity:	Human, Mouse, Rat
Host:	Rabbit
Clonality:	Polyclonal
Conjugate:	This YARS2 antibody is un-conjugated
Application:	Immunohistochemistry (IHC), ELISA

#### Product Details

Immunogen:	Recombinant protein of human YARS2
Isotype:	IgG
Characteristics:	Polyclonal Antibody
Purification:	Affinity purification

#### Target Details

Target:	YARS2
Alternative Name:	YARS2 ( <a href="#">YARS2 Products</a> )
Background:	This gene encodes a mitochondrial protein that catalyzes the attachment of tyrosine to tRNA(Tyr). Mutations in this gene are associated with myopathy with lactic acidosis and sideroblastic anemia type 2 (MLASA2). Catalyzes the attachment of tyrosine to tRNA(Tyr) in a two-step reaction: tyrosine is first activated by ATP to form Tyr-AMP and then transferred to the

## Target Details

acceptor end of tRNA(Tyr).

UniProt: [Q9Y2Z4](#)

## Application Details

Application Notes: IHC 1:50-1:200

Restrictions: For Research Use only

## Handling

Format: Liquid

Concentration: 0.2 mg/mL

Buffer: PBS with 0.05 % sodium azide and 50 % glycerol, PH7.4

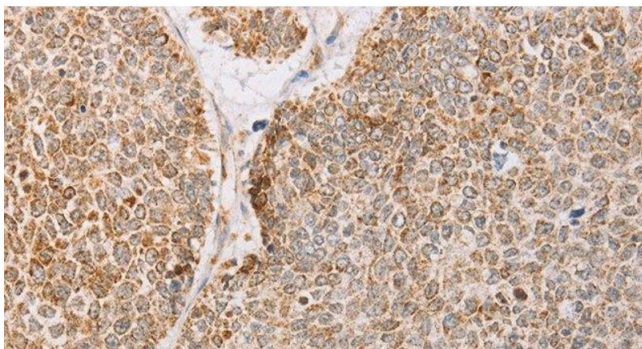
Preservative: Sodium azide

Precaution of Use: This product contains Sodium azide: a POISONOUS AND HAZARDOUS SUBSTANCE which should be handled by trained staff only.

Storage: -20 °C

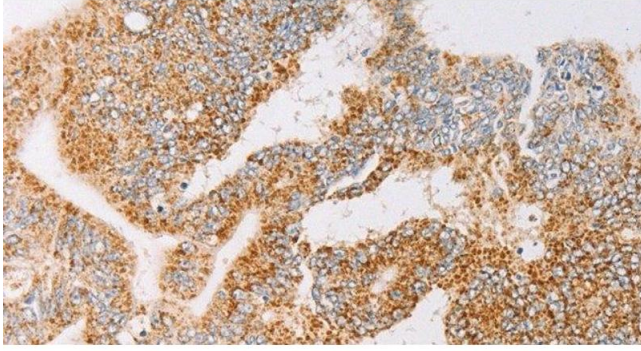
Storage Comment: Store at -20°C. Avoid freeze / thaw cycles.

## Images



### Immunohistochemistry (Paraffin-embedded Sections)

**Image 1.** Immunohistochemistry of paraffin-embedded Human lung cancer tissue using YARS2 Polyclonal Antibody at dilution 1:30



### Immunohistochemistry (Paraffin-embedded Sections)

**Image 2.** Immunohistochemistry of paraffin-embedded Human colon cancer tissue using YARS2 Polyclonal Antibody at dilution 1:30