

Datasheet for ABIN7236115
anti-GMFG antibody

3 Images

[Go to Product page](#)

Overview

Quantity:	200 µL
Target:	GMFG
Reactivity:	Human, Mouse, Rat
Host:	Rabbit
Clonality:	Polyclonal
Conjugate:	This GMFG antibody is un-conjugated
Application:	Western Blotting (WB), ELISA, Immunohistochemistry (IHC)

Product Details

Immunogen:	Recombinant protein of human GMFG
Isotype:	IgG
Characteristics:	Polyclonal Antibody
Purification:	Affinity purification

Target Details

Target:	GMFG
Alternative Name:	GMFG (GMFG Products)
Background:	Glia maturation factor, gamma, also known as GMFG, is a 142 amino acid protein that belongs to the GMF subfamily of the larger actin-binding protein ADF family. GMF-gamma is expressed predominantly in lung, heart and placenta. GMF-gamma is considered a candidate regulatory growth factor protein, mediating both paracrine and autocrine cell-cell interactions. GMF-

Target Details

gamma is phosphorylated at N-terminal serine, and its phosphorylation is enhanced by coexpression of dominant active Rac 1 and Cdc42. GMF-gamma expression is significantly increased in a cardiac ischemia/reperfusion model where inflammation and angiogenesis take place actively. As a regulator of actin-based cellular functions, GMF-gamma may provide a novel approach to modulate the pathophysiology of cardiovascular diseases. GMF-gamma is primarily found in proliferative and differentiative organs.

Molecular Weight: 17 kDa

UniProt: [O60234](#)

Application Details

Application Notes: WB 1:500-1:2000, IHC 1:50-1:200

Restrictions: For Research Use only

Handling

Format: Liquid

Concentration: 0.3 mg/mL

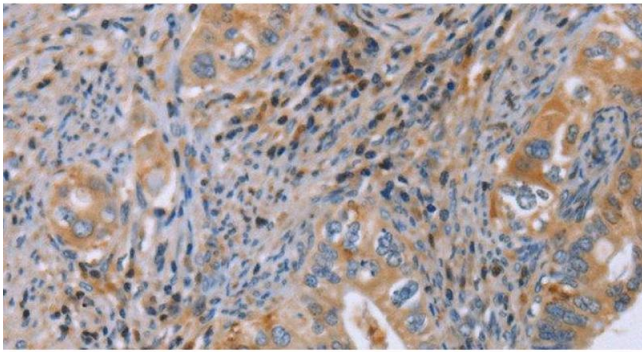
Buffer: PBS with 0.05 % sodium azide and 50 % glycerol, PH7.4

Preservative: Sodium azide

Precaution of Use: This product contains Sodium azide: a POISONOUS AND HAZARDOUS SUBSTANCE which should be handled by trained staff only.

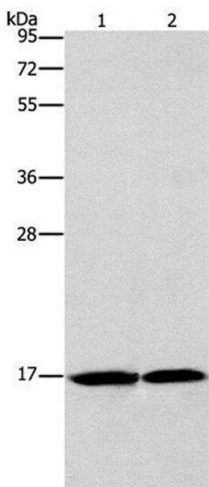
Storage: -20 °C

Storage Comment: Store at -20°C. Avoid freeze / thaw cycles.



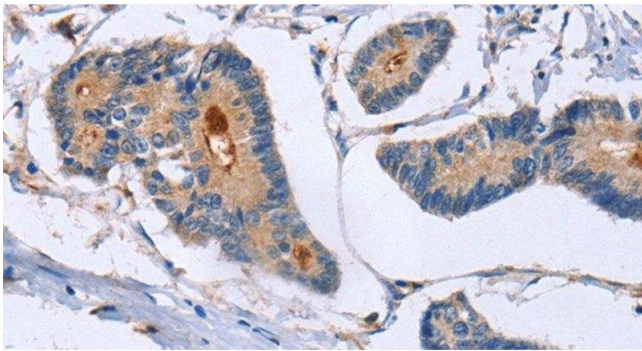
Immunohistochemistry (Paraffin-embedded Sections)

Image 1. Immunohistochemistry of paraffin-embedded Human cervical cancer using GMFG Polyclonal Antibody at dilution of 1:50



Western Blotting

Image 2. Western Blot analysis of Mouse heart and Human fetal brain tissue using GMFG Polyclonal Antibody at dilution of 1:1142



Immunohistochemistry (Paraffin-embedded Sections)

Image 3. Immunohistochemistry of paraffin-embedded Human colon cancer using GMFG Polyclonal Antibody at dilution of 1:50