

Datasheet for ABIN7236176  
**anti-GPM6A antibody**

## 3 Images

[Go to Product page](#)

## Overview

Quantity:	200 µL
Target:	GPM6A
Reactivity:	Human, Mouse, Rat
Host:	Rabbit
Clonality:	Polyclonal
Conjugate:	This GPM6A antibody is un-conjugated
Application:	Western Blotting (WB), ELISA, Immunohistochemistry (IHC)

## Product Details

Immunogen:	Recombinant protein of human GPM6A
Isotype:	IgG
Characteristics:	Polyclonal Antibody
Purification:	Affinity purification

## Target Details

Target:	GPM6A
Alternative Name:	GPM6A ( <a href="#">GPM6A Products</a> )
Background:	Neuronal membrane glycoprotein M6-ais a protein that in humans is encoded by the GPM6A gene. Involved in neuronal differentiation, including differentiation and migration of neuronal stem cells. Plays a role in neuronal plasticity and is involved in neurite and filopodia outgrowth, filopodia motility and probably synapse formation. GPM6A-induced filopodia

## Target Details

formation involves mitogen-activated protein kinase (MAPK) and Src signaling pathways. May be involved in neuronal NGF-dependent Ca<sup>2+</sup> influx. May be involved in regulation of endocytosis and intracellular trafficking of G-protein-coupled receptors (GPCRs), enhances internalization and recycling of mu-type opioid receptor.

Molecular Weight: 31 kDa

UniProt: [P51674](#)

## Application Details

Application Notes: WB 1:1000-1:5000, IHC 1:50-1:200

Restrictions: For Research Use only

## Handling

Format: Liquid

Concentration: 0.4 mg/mL

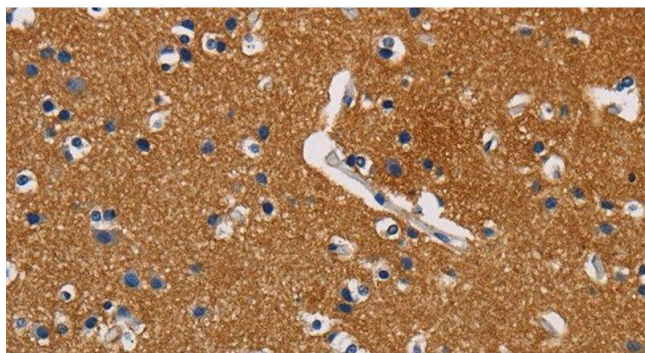
Buffer: PBS with 0.05 % sodium azide and 50 % glycerol, PH7.4

Preservative: Sodium azide

Precaution of Use: This product contains Sodium azide: a POISONOUS AND HAZARDOUS SUBSTANCE which should be handled by trained staff only.

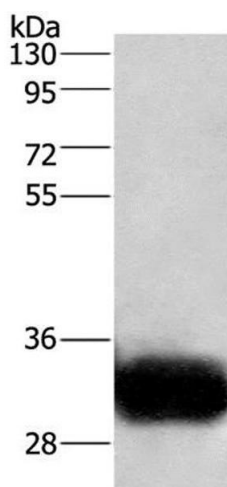
Storage: -20 °C

Storage Comment: Store at -20°C. Avoid freeze / thaw cycles.



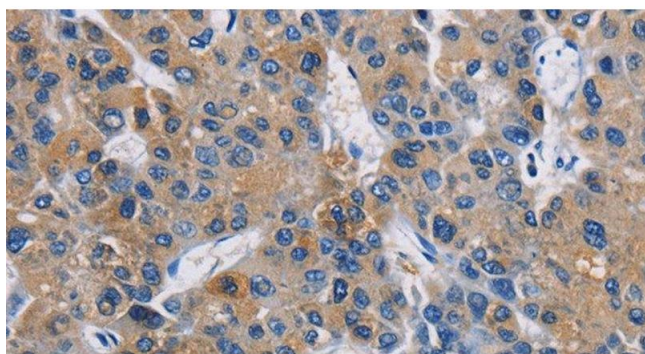
#### Immunohistochemistry (Paraffin-embedded Sections)

**Image 1.** Immunohistochemistry of paraffin-embedded Human brain using GPM6A Polyclonal Antibody at dilution of 1:40



#### Western Blotting

**Image 2.** Western Blot analysis of Human fetal brain tissue using GPM6A Polyclonal Antibody at dilution of 1:950



#### Immunohistochemistry (Paraffin-embedded Sections)

**Image 3.** Immunohistochemistry of paraffin-embedded Human liver cancer using GPM6A Polyclonal Antibody at dilution of 1:40