



Datasheet for ABIN7236200 anti-Ketohexokinase antibody



[Go to Product page](#)

1 Image

Overview

Quantity:	200 µL
Target:	Ketohexokinase (KHK)
Reactivity:	Human, Mouse
Host:	Rabbit
Clonality:	Polyclonal
Conjugate:	This Ketohexokinase antibody is un-conjugated
Application:	Western Blotting (WB), ELISA

Product Details

Immunogen:	Recombinant protein of human KHK
Isotype:	IgG
Characteristics:	Polyclonal Antibody
Purification:	Affinity purification

Target Details

Target:	Ketohexokinase (KHK)
Alternative Name:	KHK (KHK Products)
Background:	This gene encodes ketohexokinase that catalyzes conversion of fructose to fructose-1-phosphate. The product of this gene is the first enzyme with a specialized pathway that catabolizes dietary fructose. Alternatively spliced transcript variants encoding different isoforms have been identified.

Target Details

Molecular Weight: 33 kDa

UniProt: [P50053](#)

Application Details

Application Notes: WB 1:1000-1:5000

Restrictions: For Research Use only

Handling

Format: Liquid

Concentration: 0.5 mg/mL

Buffer: PBS with 0.05 % sodium azide and 50 % glycerol, PH7.4

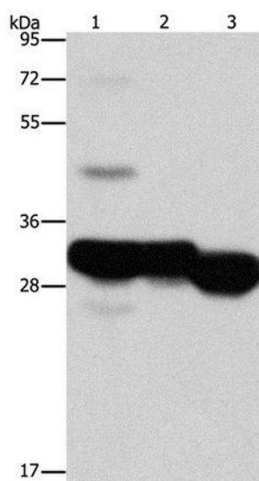
Preservative: Sodium azide

Precaution of Use: This product contains Sodium azide: a POISONOUS AND HAZARDOUS SUBSTANCE which should be handled by trained staff only.

Storage: -20 °C

Storage Comment: Store at -20°C. Avoid freeze / thaw cycles.

Images



Western Blotting

Image 1. Western Blot analysis of Mouse liver and kidney tissue, Human fetal liver tissue using KHK Polyclonal Antibody at dilution of 1:1250