

Datasheet for ABIN7236240

anti-SPHK2 antibody**2** Images[Go to Product page](#)

Overview

Quantity:	200 µL
Target:	SPHK2
Reactivity:	Human, Mouse
Host:	Rabbit
Clonality:	Polyclonal
Application:	Western Blotting (WB), Immunohistochemistry (IHC), ELISA

Product Details

Immunogen:	Recombinant protein of human SPHK2
Isotype:	IgG
Characteristics:	Polyclonal Antibody
Purification:	Affinity purification

Target Details

Target:	SPHK2
Alternative Name:	SPHK2 (SPHK2 Products)
Background:	This gene encodes one of two sphingosine kinase isozymes that catalyze the phosphorylation of sphingosine into sphingosine 1-phosphate. Sphingosine 1-phosphate mediates many cellular processes including migration, proliferation and apoptosis, and also plays a role in several types of cancer by promoting angiogenesis and tumorigenesis. The encoded protein may play a role in breast cancer proliferation and chemoresistance. Alternatively spliced transcript variants

Target Details

encoding multiple isoforms have been observed for this gene.

Molecular Weight: 69 kDa

UniProt: [Q9NRA0](#)

Pathways: [VEGF Signaling](#)

Application Details

Application Notes: WB 1:200-1:1000, IHC 1:25-1:100

Restrictions: For Research Use only

Handling

Format: Liquid

Concentration: 0.4 mg/mL

Buffer: PBS with 0.05 % sodium azide and 50 % glycerol, PH7.4

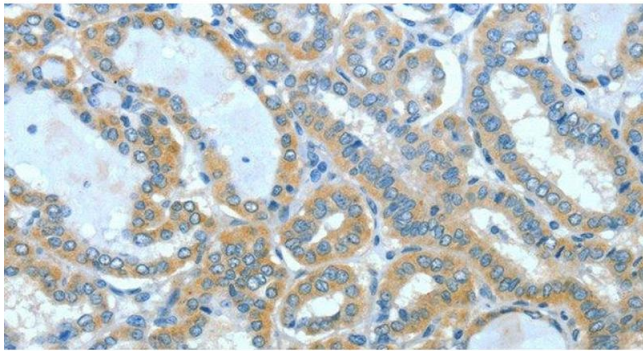
Preservative: Sodium azide

Precaution of Use: This product contains Sodium azide: a POISONOUS AND HAZARDOUS SUBSTANCE which should be handled by trained staff only.

Storage: -20 °C

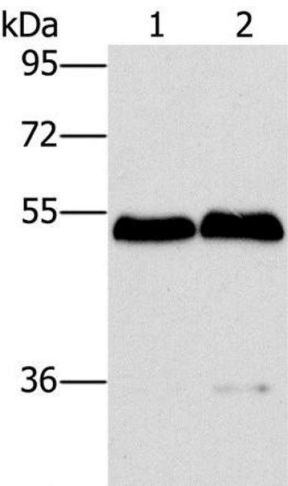
Storage Comment: Store at -20°C. Avoid freeze / thaw cycles.

Images



Immunohistochemistry (Paraffin-embedded Sections)

Image 1. Immunohistochemistry of paraffin-embedded Human thyroid cancer using SPHK2 Polyclonal Antibody at dilution of 1:60



Western Blotting

Image 2. Western Blot analysis of Mouse brain and liver tissue using SPHK2 Polyclonal Antibody at dilution of 1:200