

Datasheet for ABIN7236253

anti-ASB8 antibody**1** Image[Go to Product page](#)

Overview

Quantity:	200 µL
Target:	ASB8
Reactivity:	Human, Mouse
Host:	Rabbit
Clonality:	Polyclonal
Conjugate:	This ASB8 antibody is un-conjugated
Application:	ELISA, Immunohistochemistry (IHC)

Product Details

Immunogen:	Recombinant protein of human ASB8
Isotype:	IgG
Characteristics:	Polyclonal Antibody
Purification:	Affinity purification

Target Details

Target:	ASB8
Alternative Name:	ASB8 (ASB8 Products)
Background:	ASB-8 (ankyrin repeat and SOCS box-containing 8) is a 288 amino acid member of the ASB family that contains one SOCS box domain and four ANK repeats. Localized to the cytoplasm, ASB-8 functions as a substrate-recognition component of an E3 ubiquitin-protein ligase complex and, working in conjunction with other proteins, plays a role in the ubiquitination and

Target Details

subsequent proteasomal degradation of target proteins. The highest level of ASB-8 expression has been detected in skeletal muscle. ASB-8 is also expressed in heart, brain, placenta, liver, kidney and pancreas.

UniProt: [Q9H765](#)

Application Details

Application Notes: IHC 1:25-1:100

Restrictions: For Research Use only

Handling

Format: Liquid

Concentration: 0.7 mg/mL

Buffer: PBS with 0.05 % sodium azide and 50 % glycerol, PH7.4

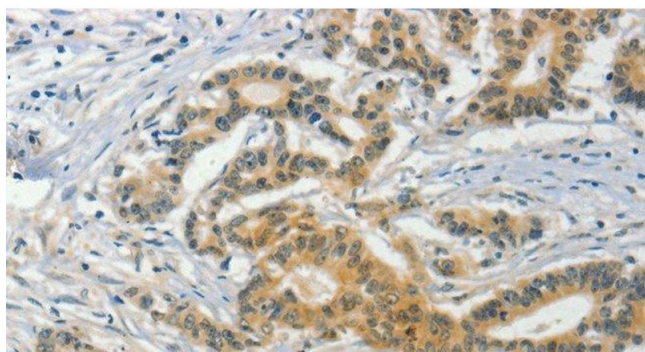
Preservative: Sodium azide

Precaution of Use: This product contains Sodium azide: a POISONOUS AND HAZARDOUS SUBSTANCE which should be handled by trained staff only.

Storage: -20 °C

Storage Comment: Store at -20°C. Avoid freeze / thaw cycles.

Images



Immunohistochemistry (Paraffin-embedded Sections)

Image 1. Immunohistochemistry of paraffin-embedded Human colon cancer tissue using ASB8 Polyclonal Antibody at dilution 1:50