

Datasheet for ABIN7236313

anti-AMY2A antibody

3 Images

[Go to Product page](#)

Overview

Quantity:	200 µL
Target:	AMY2A
Reactivity:	Human, Mouse
Host:	Rabbit
Clonality:	Polyclonal
Conjugate:	This AMY2A antibody is un-conjugated
Application:	Western Blotting (WB), ELISA, Immunohistochemistry (IHC)

Product Details

Immunogen:	Recombinant protein of human AMY2A
Isotype:	IgG
Characteristics:	Polyclonal Antibody
Purification:	Affinity purification

Target Details

Target:	AMY2A
Alternative Name:	AMY2A (AMY2A Products)
Background:	Amylases are secreted proteins that hydrolyze 1,4- α -glucoside bonds in oligosaccharides and polysaccharides, and thus catalyze the first step in digestion of dietary starch and glycogen. The human genome has a cluster of several amylase genes that are expressed at high levels in either salivary gland or pancreas. This gene encodes an amylase isoenzyme

Target Details

produced by the pancreas.

Molecular Weight: 58 kDa

UniProt: [P04746](#)

Application Details

Application Notes: WB 1:1000-1:5000, IHC 1:50-1:200

Restrictions: For Research Use only

Handling

Format: Liquid

Concentration: 0.7 mg/mL

Buffer: PBS with 0.05 % sodium azide and 50 % glycerol, PH7.4

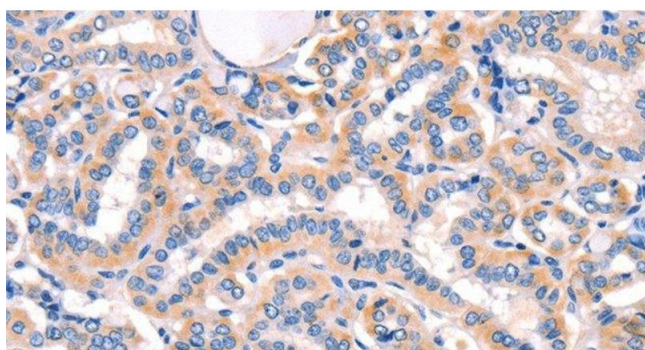
Preservative: Sodium azide

Precaution of Use: This product contains Sodium azide: a POISONOUS AND HAZARDOUS SUBSTANCE which should be handled by trained staff only.

Storage: -20 °C

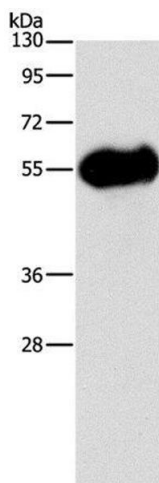
Storage Comment: Store at -20°C. Avoid freeze / thaw cycles.

Images



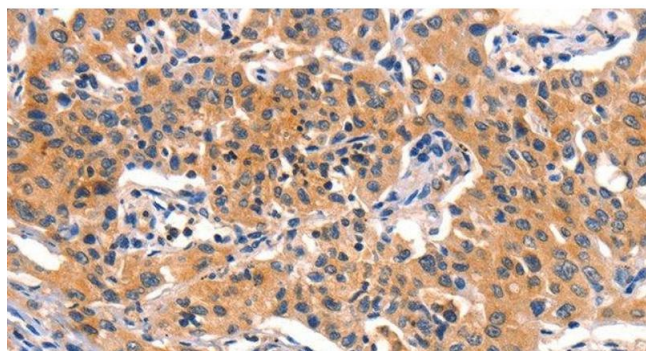
Immunohistochemistry (Paraffin-embedded Sections)

Image 1. Immunohistochemistry of paraffin-embedded Human thyroid cancer using AMY2A Polyclonal Antibody at dilution of 1:50



Western Blotting

Image 2. Western Blot analysis of Mouse pancreas tissue using AMY2A Polyclonal Antibody at dilution of 1:1400



Immunohistochemistry (Paraffin-embedded Sections)

Image 3. Immunohistochemistry of paraffin-embedded Human lung cancer using AMY2A Polyclonal Antibody at dilution of 1:50