

Datasheet for ABIN7236358

anti-BCL10 antibody

3 Images

[Go to Product page](#)

Overview

Quantity:	200 µL
Target:	BCL10
Reactivity:	Human, Mouse, Rat
Host:	Rabbit
Clonality:	Polyclonal
Application:	Western Blotting (WB), Immunohistochemistry (IHC), ELISA

Product Details

Immunogen:	Recombinant protein of human BCL10
Isotype:	IgG
Characteristics:	Polyclonal Antibody
Purification:	Affinity purification

Target Details

Target:	BCL10
Alternative Name:	BCL10 (BCL10 Products)
Background:	This gene was identified by its translocation in a case of mucosa-associated lymphoid tissue (MALT) lymphoma. The protein encoded by this gene contains a caspase recruitment domain (CARD), and has been shown to induce apoptosis and to activate NF-kappaB. This protein is reported to interact with other CARD domain containing proteins including CARD9, 10, 11 and 14, which are thought to function as upstream regulators in NF-kappaB signaling. This protein

Target Details

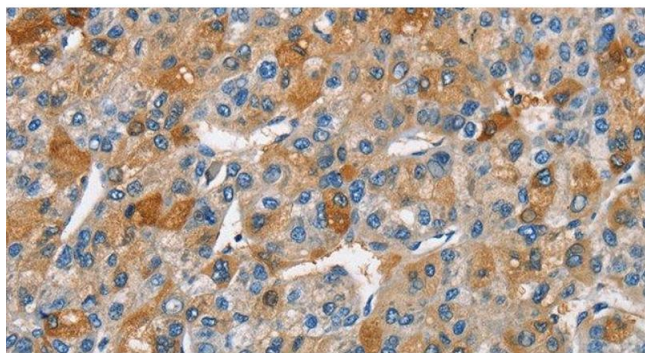
	is found to form a complex with MALT1, a protein encoded by another gene known to be translocated in MALT lymphoma.
Molecular Weight:	26 kDa
UniProt:	O95999
Pathways:	TCR Signaling , Fc-epsilon Receptor Signaling Pathway , Activation of Innate immune Response , Positive Regulation of Immune Effector Process , Production of Molecular Mediator of Immune Response , Tube Formation , Positive Regulation of Endopeptidase Activity , BCR Signaling , Ubiquitin Proteasome Pathway , S100 Proteins

Application Details

Application Notes:	WB 1:500-1:2000, IHC 1:50-1:200
Restrictions:	For Research Use only

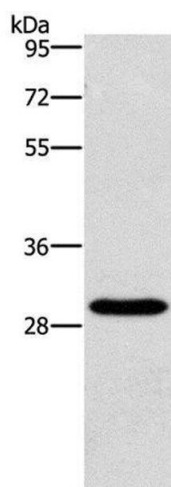
Handling

Format:	Liquid
Concentration:	0.5 mg/mL
Buffer:	PBS with 0.05 % sodium azide and 50 % glycerol, PH7.4
Preservative:	Sodium azide
Precaution of Use:	This product contains Sodium azide: a POISONOUS AND HAZARDOUS SUBSTANCE which should be handled by trained staff only.
Storage:	-20 °C
Storage Comment:	Store at -20°C. Avoid freeze / thaw cycles.



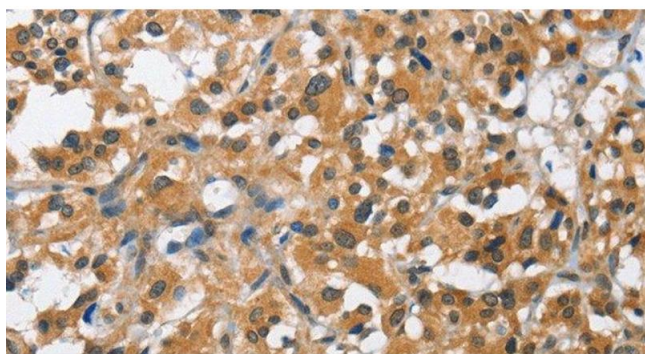
Immunohistochemistry (Paraffin-embedded Sections)

Image 1. Immunohistochemistry of paraffin-embedded Human liver cancer using BCL10 Polyclonal Antibody at dilution of 1:40



Western Blotting

Image 2. Western Blot analysis of Hela cell using BCL10 Polyclonal Antibody at dilution of 1:950



Immunohistochemistry (Paraffin-embedded Sections)

Image 3. Immunohistochemistry of paraffin-embedded Human thyroid cancer using BCL10 Polyclonal Antibody at dilution of 1:40