

Datasheet for ABIN7236370

anti-SLAMF8 antibody**2** Images[Go to Product page](#)

Overview

Quantity:	200 µL
Target:	SLAMF8
Reactivity:	Human
Host:	Rabbit
Clonality:	Polyclonal
Conjugate:	This SLAMF8 antibody is un-conjugated
Application:	ELISA, Immunohistochemistry (IHC)

Product Details

Immunogen:	Recombinant protein of human SLAMF8
Isotype:	IgG
Characteristics:	Polyclonal Antibody
Purification:	Affinity purification

Target Details

Target:	SLAMF8
Alternative Name:	SLAMF8 (SLAMF8 Products)
Background:	This gene encodes a member of the CD2 family of cell surface proteins involved in lymphocyte activation. These proteins are characterized by Ig domains. This protein is expressed in lymphoid tissues, and studies of a similar protein in mouse suggest that it may function during B cell lineage commitment. The gene is found in a region of chromosome 1 containing many

Target Details

CD2 genes.

UniProt: [Q9P0V8](#)

Application Details

Application Notes: IHC 1:50-1:200

Restrictions: For Research Use only

Handling

Format: Liquid

Concentration: 0.6 mg/mL

Buffer: PBS with 0.05 % sodium azide and 50 % glycerol, PH7.4

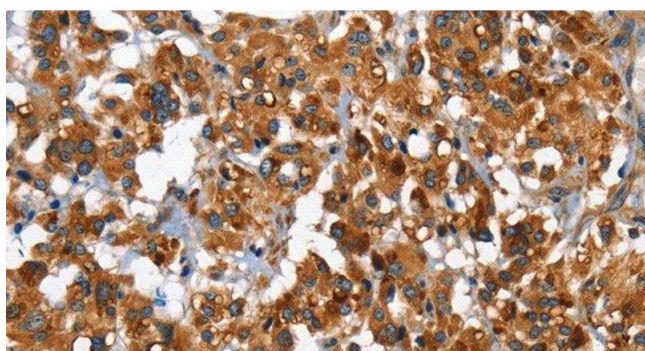
Preservative: Sodium azide

Precaution of Use: This product contains Sodium azide: a POISONOUS AND HAZARDOUS SUBSTANCE which should be handled by trained staff only.

Storage: -20 °C

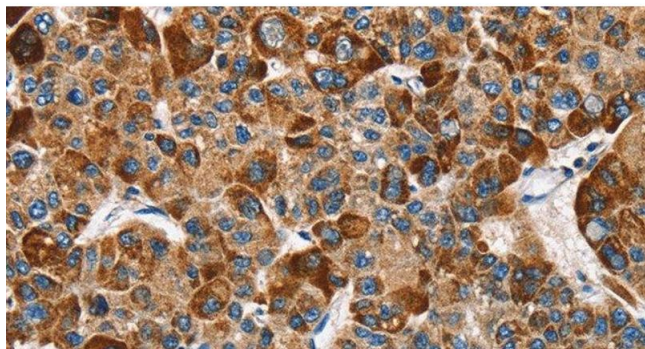
Storage Comment: Store at -20°C. Avoid freeze / thaw cycles.

Images



Immunohistochemistry (Paraffin-embedded Sections)

Image 1. Immunohistochemistry of paraffin-embedded Human thyroid cancer tissue using SLAMF8 Polyclonal Antibody at dilution 1:40



Immunohistochemistry (Paraffin-embedded Sections)

Image 2. Immunohistochemistry of paraffin-embedded Human liver cancer tissue using SLAMF8 Polyclonal Antibody at dilution 1:40