

Datasheet for ABIN7236519

anti-CD22 antibody**2** Images[Go to Product page](#)

Overview

Quantity:	200 µL
Target:	CD22
Reactivity:	Human
Host:	Rabbit
Clonality:	Polyclonal
Conjugate:	This CD22 antibody is un-conjugated
Application:	ELISA, Immunohistochemistry (IHC)

Product Details

Immunogen:	Recombinant protein of human CD22
Isotype:	IgG
Characteristics:	Polyclonal Antibody
Purification:	Affinity purification

Target Details

Target:	CD22
Alternative Name:	CD22 (CD22 Products)
Background:	The B lymphocyte specific CD22 antigen, also designated B-lymphocyte cell adhesion molecule (BLCAM), sialic acid-binding Ig-like lectin 2 (Siglec-2) and Leu-14, is a type I integral membrane glycoprotein, structurally similar to other cell adhesion molecules (CAMs), which acts as a regulator of B cell signaling. CD22 is expressed as both a cytoplasmic and membrane protein

Target Details

during discrete stages of B cell lymphocyte differentiation. The cytoplasmic form of CD22, expressed early in B cell development, is a useful marker for acute lymphocytic leukemia. The membrane form of CD22 is expressed in mature B cells prior to their differentiation into plasma cells.

UniProt: [P20273](#)

Application Details

Application Notes: IHC 1:50-1:200

Restrictions: For Research Use only

Handling

Format: Liquid

Concentration: 0.3 mg/mL

Buffer: PBS with 0.05 % sodium azide and 50 % glycerol, PH7.4

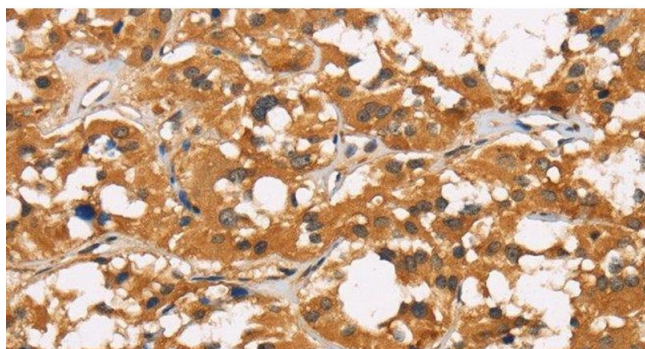
Preservative: Sodium azide

Precaution of Use: This product contains Sodium azide: a POISONOUS AND HAZARDOUS SUBSTANCE which should be handled by trained staff only.

Storage: -20 °C

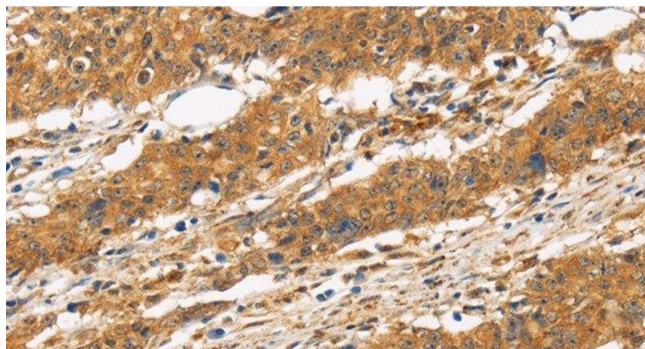
Storage Comment: Store at -20°C. Avoid freeze / thaw cycles.

Images



Immunohistochemistry (Paraffin-embedded Sections)

Image 1. Immunohistochemistry of paraffin-embedded Human thyroid cancer tissue using CD22 Polyclonal Antibody at dilution 1:50



Immunohistochemistry (Paraffin-embedded Sections)

Image 2. Immunohistochemistry of paraffin-embedded Human gastric cancer tissue using CD22 Polyclonal Antibody at dilution 1:50