

Datasheet for ABIN7236552

**anti-CD43 antibody****2** Images[Go to Product page](#)

## Overview

Quantity:	200 µL
Target:	CD43 (SPN)
Reactivity:	Human
Host:	Rabbit
Clonality:	Polyclonal
Conjugate:	This CD43 antibody is un-conjugated
Application:	Immunohistochemistry (IHC), ELISA

## Product Details

Immunogen:	Recombinant protein of human SPN
Isotype:	IgG
Characteristics:	Polyclonal Antibody
Purification:	Affinity purification

## Target Details

Target:	CD43 (SPN)
Alternative Name:	CD43 ( <a href="#">SPN Products</a> )
Background:	The protein encoded by this gene is a major sialoglycoprotein found on the surface of thymocytes, T lymphocytes, monocytes, granulocytes, and some B lymphocytes. It may be part of a physiologic ligand-receptor complex involved in T-cell activation. During T-cell activation, this protein is actively removed from the T-cell-APC (antigen-presenting cell) contact site,

## Target Details

suggesting a negative regulatory role in adaptive immune response.

UniProt: [P16150](#)

Pathways: [Regulation of Leukocyte Mediated Immunity](#)

## Application Details

Application Notes: IHC 1:100-1:300

Restrictions: For Research Use only

## Handling

Format: Liquid

Concentration: 0.7 mg/mL

Buffer: PBS with 0.05 % sodium azide and 50 % glycerol, PH7.4

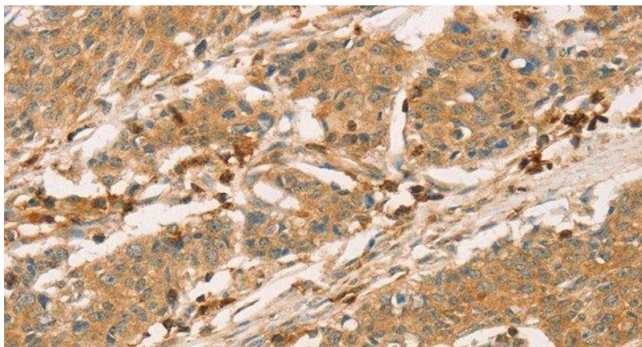
Preservative: Sodium azide

Precaution of Use: This product contains Sodium azide: a POISONOUS AND HAZARDOUS SUBSTANCE which should be handled by trained staff only.

Storage: -20 °C

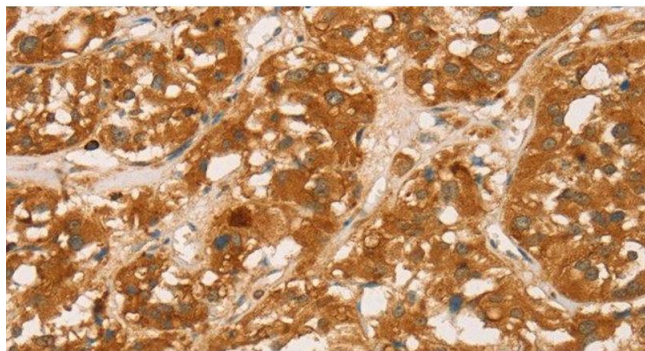
Storage Comment: Store at -20°C. Avoid freeze / thaw cycles.

## Images



### Immunohistochemistry (Paraffin-embedded Sections)

**Image 1.** Immunohistochemistry of paraffin-embedded Human gastric cancer tissue using CD43 Polyclonal Antibody at dilution 1:60



#### Immunohistochemistry (Paraffin-embedded Sections)

**Image 2.** Immunohistochemistry of paraffin-embedded Human thyroid cancer tissue using CD43 Polyclonal Antibody at dilution 1:60