



Datasheet for ABIN7236556  
**anti-CDC37L1 antibody**



[Go to Product page](#)

2 Images

Overview

Quantity:	200 µL
Target:	CDC37L1
Reactivity:	Human, Rat, Mouse
Host:	Rabbit
Clonality:	Polyclonal
Conjugate:	This CDC37L1 antibody is un-conjugated
Application:	ELISA, Immunohistochemistry (IHC)

Product Details

Immunogen:	Recombinant protein of human CDC37L1
Isotype:	IgG
Characteristics:	Polyclonal Antibody
Purification:	Affinity purification

Target Details

Target:	CDC37L1
Alternative Name:	CDC37L1 ( <a href="#">CDC37L1 Products</a> )
Background:	CDC37L1 is a cytoplasmic phosphoprotein that exists in complex with HSP90 (HSPCA, MIM 140571) as well as several other proteins involved in HSP90-mediated protein folding
UniProt:	<a href="#">Q7L3B6</a>

## Application Details

---

Application Notes: IHC 1:100-1:300

Restrictions: For Research Use only

## Handling

---

Format: Liquid

Concentration: 0.6 mg/mL

Buffer: PBS with 0.05 % sodium azide and 50 % glycerol, PH7.4

Preservative: Sodium azide

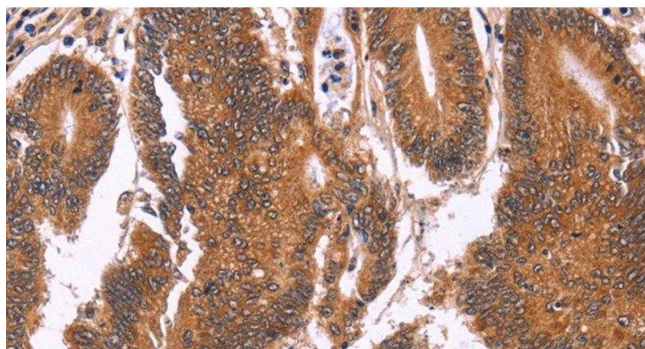
Precaution of Use: This product contains Sodium azide: a POISONOUS AND HAZARDOUS SUBSTANCE which should be handled by trained staff only.

Storage: -20 °C

Storage Comment: Store at -20°C. Avoid freeze / thaw cycles.

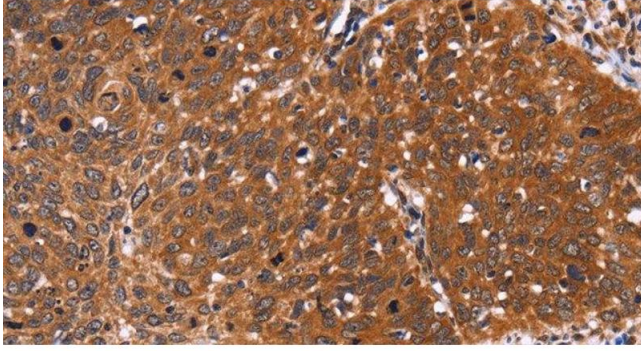
## Images

---



### Immunohistochemistry (Paraffin-embedded Sections)

**Image 1.** Immunohistochemistry of paraffin-embedded Human colon cancer tissue using CDC37L1 Polyclonal Antibody at dilution 1:60



### Immunohistochemistry (Paraffin-embedded Sections)

**Image 2.** Immunohistochemistry of paraffin-embedded Human cervical cancer tissue using CDC37L1 Polyclonal Antibody at dilution 1:60