



Datasheet for ABIN7236580

## anti-CEP55 antibody



[Go to Product page](#)

### 1 Image

#### Overview

Quantity:	200 µL
Target:	CEP55
Reactivity:	Human, Rat
Host:	Rabbit
Clonality:	Polyclonal
Conjugate:	This CEP55 antibody is un-conjugated
Application:	Western Blotting (WB), ELISA

#### Product Details

Immunogen:	Recombinant protein of human CEP55
Isotype:	IgG
Characteristics:	Polyclonal Antibody
Purification:	Affinity purification

#### Target Details

Target:	CEP55
Alternative Name:	CEP55 ( <a href="#">CEP55 Products</a> )
Background:	Centrosomal protein of 55 kDa is a protein that in humans is encoded by the CEP55 gene. CEP55 is a mitotic phosphoprotein that plays a key role in cytokinesis, the final stage of cell division. Interacts (phosphorylated on Ser-425 and Ser-428) with PLK1. Interacts with AKAP9, the interaction occurs in interphase and is lost upon mitotic entry. Interacts with PCNT, the

## Target Details

interaction occurs in interphase and is lost upon mitotic entry. Interacts with PDCD6IP, the interaction is direct, CEP55 binds PDCD6IP in a 2:1 stoichiometry, PDCD6IP competes with TSG101 for the same binding site.

Molecular Weight: 54 kDa

UniProt: [Q53EZ4](#)

## Application Details

Application Notes: WB 1:200-1:1000

Restrictions: For Research Use only

## Handling

Format: Liquid

Concentration: 0.7 mg/mL

Buffer: PBS with 0.05 % sodium azide and 50 % glycerol, PH7.4

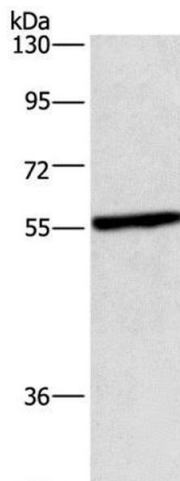
Preservative: Sodium azide

Precaution of Use: This product contains Sodium azide: a POISONOUS AND HAZARDOUS SUBSTANCE which should be handled by trained staff only.

Storage: -20 °C

Storage Comment: Store at -20°C. Avoid freeze / thaw cycles.

## Images



### Western Blotting

**Image 1.** Western Blot analysis of Hela cell using CEP55 Polyclonal Antibody at dilution of 1:550