

Datasheet for ABIN7236600  
**anti-CHMP4B antibody**[Go to Product page](#)

## 2 Images

## Overview

Quantity:	200 µL
Target:	CHMP4B
Reactivity:	Human, Mouse
Host:	Rabbit
Clonality:	Polyclonal
Conjugate:	This CHMP4B antibody is un-conjugated
Application:	Immunohistochemistry (IHC), ELISA

## Product Details

Immunogen:	Recombinant protein of human CHMP4B
Isotype:	IgG
Characteristics:	Polyclonal Antibody
Purification:	Affinity purification

## Target Details

Target:	CHMP4B
Alternative Name:	CHMP4B ( <a href="#">CHMP4B Products</a> )
Background:	This gene encodes a member of the chromatin-modifying protein/charged multivesicular body protein (CHMP) protein family. The protein is part of the endosomal sorting complex required for transport (ESCRT) complex III (ESCRT-III), which functions in the sorting of endocytosed cell-surface receptors into multivesicular endosomes. The ESCRT machinery also functions in

## Target Details

the final abscisson stage of cytokinesis and in the budding of enveloped viruses such as HIV-1.

UniProt: [Q9H444](#)

## Application Details

Application Notes: IHC 1:50-1:200

Restrictions: For Research Use only

## Handling

Format: Liquid

Concentration: 0.2 mg/mL

Buffer: PBS with 0.05 % sodium azide and 50 % glycerol, PH7.4

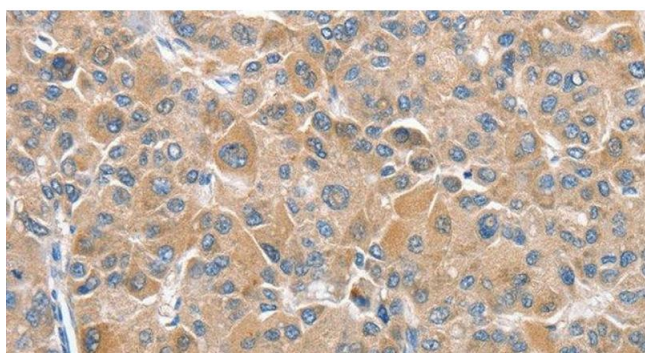
Preservative: Sodium azide

Precaution of Use: This product contains Sodium azide: a POISONOUS AND HAZARDOUS SUBSTANCE which should be handled by trained staff only.

Storage: -20 °C

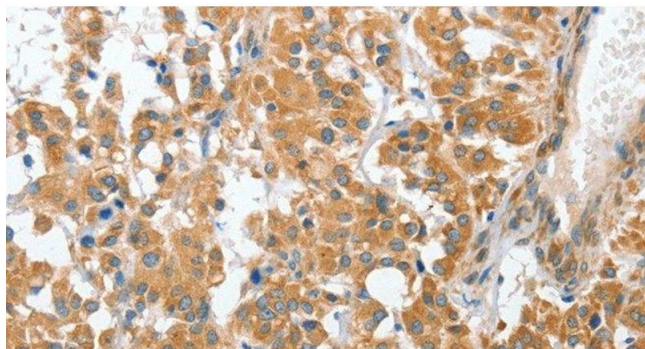
Storage Comment: Store at -20°C. Avoid freeze / thaw cycles.

## Images



### Immunohistochemistry (Paraffin-embedded Sections)

**Image 1.** Immunohistochemistry of paraffin-embedded Human liver cancer tissue using CHMP4B Polyclonal Antibody at dilution 1:40



#### Immunohistochemistry (Paraffin-embedded Sections)

**Image 2.** Immunohistochemistry of paraffin-embedded Human thyroid cancer tissue using CHMP4B Polyclonal Antibody at dilution 1:40