

Datasheet for ABIN7236616  
**anti-PLEKH01 antibody**

## 3 Images

[Go to Product page](#)

## Overview

Quantity:	200 µL
Target:	PLEKH01
Reactivity:	Human, Mouse, Rat
Host:	Rabbit
Clonality:	Polyclonal
Conjugate:	This PLEKH01 antibody is un-conjugated
Application:	ELISA, Western Blotting (WB), Immunohistochemistry (IHC)

## Product Details

Immunogen:	Recombinant protein of human PLEKH01
Isotype:	IgG
Characteristics:	Polyclonal Antibody
Purification:	Affinity purification

## Target Details

Target:	PLEKH01
Alternative Name:	PLEKH01 ( <a href="#">PLEKH01 Products</a> )
Background:	Pleckstrin homology domain-containing family O member 1 is a protein that in humans is encoded by the PLEKH01 gene. Plays a role in the regulation of the actin cytoskeleton through its interactions with actin capping protein (CP). May function to target CK2 to the plasma membrane thereby serving as an adapter to facilitate the phosphorylation of CP by protein

## Target Details

kinase 2 (CK2). Appears to target ATM to the plasma membrane. Appears to also inhibit tumor cell growth by inhibiting AKT-mediated cell-survival.

Molecular Weight: 46 kDa

UniProt: [Q53GL0](#)

## Application Details

Application Notes: WB 1:200-1:1000, IHC 1:100-1:300

Restrictions: For Research Use only

## Handling

Format: Liquid

Concentration: 1 mg/mL

Buffer: PBS with 0.05 % sodium azide and 50 % glycerol, PH7.4

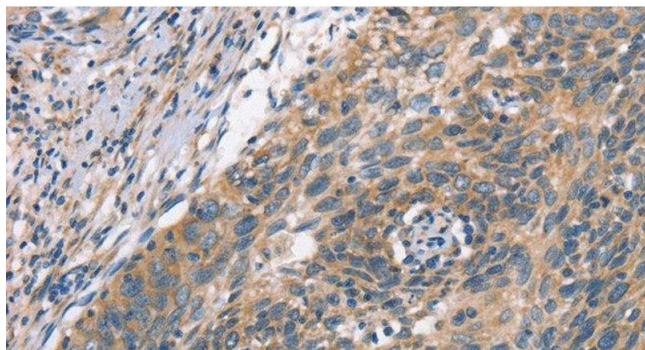
Preservative: Sodium azide

Precaution of Use: This product contains Sodium azide: a POISONOUS AND HAZARDOUS SUBSTANCE which should be handled by trained staff only.

Storage: -20 °C

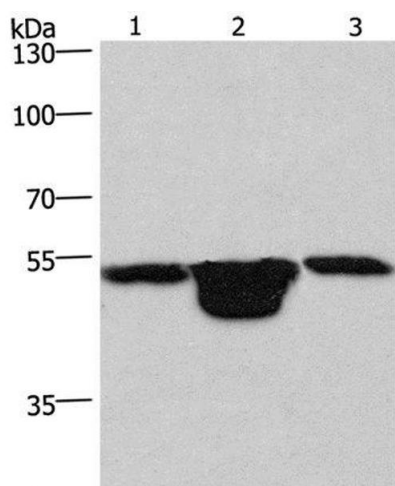
Storage Comment: Store at -20°C. Avoid freeze / thaw cycles.

## Images



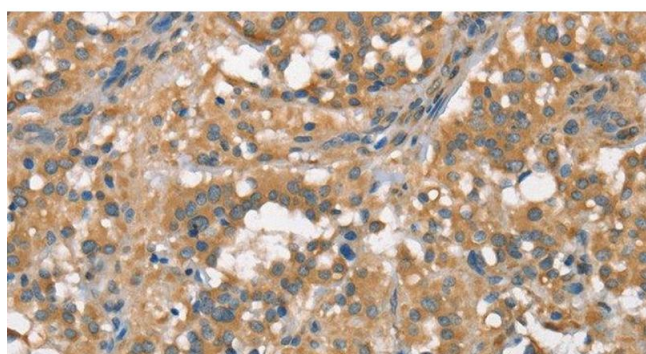
### Immunohistochemistry (Paraffin-embedded Sections)

**Image 1.** Immunohistochemistry of paraffin-embedded Human cervical cancer using PLEKH01 Polyclonal Antibody at dilution of 1:70



#### Western Blotting

**Image 2.** Western Blot analysis of Hela cell, Mouse muscle and kidney tissue using PLEKH01 Polyclonal Antibody at dilution of 1:200



#### Immunohistochemistry (Paraffin-embedded Sections)

**Image 3.** Immunohistochemistry of paraffin-embedded Human thyroid cancer using PLEKH01 Polyclonal Antibody at dilution of 1:70