



[Go to Product page](#)

Datasheet for ABIN7236649

anti-COMP antibody

2 Images

Overview

Quantity:	200 µL
Target:	COMP
Reactivity:	Human, Mouse, Rat
Host:	Rabbit
Clonality:	Polyclonal
Conjugate:	This COMP antibody is un-conjugated
Application:	Western Blotting (WB), Immunohistochemistry (IHC), ELISA

Product Details

Immunogen:	Recombinant protein of human COMP
Isotype:	IgG
Characteristics:	Polyclonal Antibody
Purification:	Affinity purification

Target Details

Target:	COMP
Alternative Name:	COMP (COMP Products)
Background:	The protein encoded by this gene is a noncollagenous extracellular matrix (ECM) protein. It consists of five identical glycoprotein subunits, each with EGF-like and calcium-binding (thrombospondin-like) domains. Oligomerization results from formation of a five-stranded coiled coil and disulfides. Binding to other ECM proteins such as collagen appears to depend on

Target Details

divalent cations. Mutations can cause the osteochondrodysplasias pseudochoondroplasia (PSACH) and multiple epiphyseal dysplasia (MED).

Molecular Weight: 83 kDa

UniProt: [P49747](#)

Application Details

Application Notes: WB 1:500-1:2000, IHC 1:50-1:200

Restrictions: For Research Use only

Handling

Format: Liquid

Concentration: 0.3 mg/mL

Buffer: PBS with 0.05 % sodium azide and 50 % glycerol, PH7.4

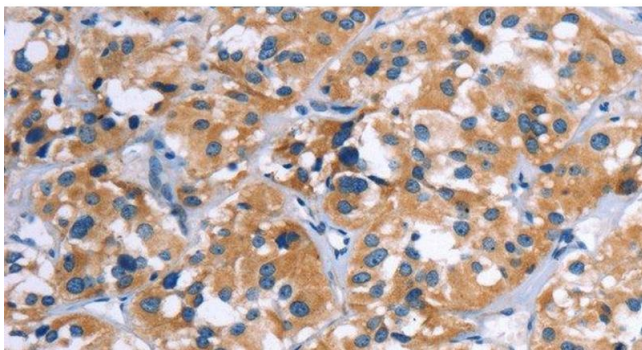
Preservative: Sodium azide

Precaution of Use: This product contains Sodium azide: a POISONOUS AND HAZARDOUS SUBSTANCE which should be handled by trained staff only.

Storage: -20 °C

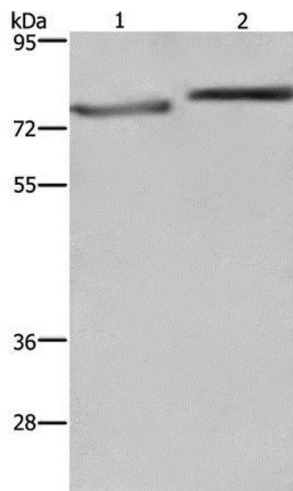
Storage Comment: Store at -20°C. Avoid freeze / thaw cycles.

Images



Immunohistochemistry (Paraffin-embedded Sections)

Image 1. Immunohistochemistry of paraffin-embedded Human thyroid cancer using COMP Polyclonal Antibody at dilution of 1:50



Western Blotting

Image 2. Western Blot analysis of PC3 and Hela cell using COMP Polyclonal Antibody at dilution of 1:600