

Datasheet for ABIN7236653

anti-CORO1C antibody**3** Images[Go to Product page](#)

Overview

Quantity:	200 µL
Target:	CORO1C
Reactivity:	Human, Mouse
Host:	Rabbit
Clonality:	Polyclonal
Conjugate:	This CORO1C antibody is un-conjugated
Application:	Western Blotting (WB), ELISA, Immunohistochemistry (IHC)

Product Details

Immunogen:	Recombinant protein of human CORO1C
Isotype:	IgG
Characteristics:	Polyclonal Antibody
Purification:	Affinity purification

Target Details

Target:	CORO1C
Alternative Name:	CORO1C (CORO1C Products)
Background:	This gene encodes a member of the WD repeat protein family. WD repeats are minimally conserved regions of approximately 40 amino acids typically bracketed by gly-his and trp-aspartate (GH-WD), which facilitate formation of heterotrimeric or multiprotein complexes. Members of this family are involved in a variety of cellular processes, including cell

Target Details

cycle progression, signal transduction, apoptosis, and gene regulation. Three transcript variants encoding two different isoforms have been found for this gene.

Molecular Weight:	53 kDa
UniProt:	Q9ULV4

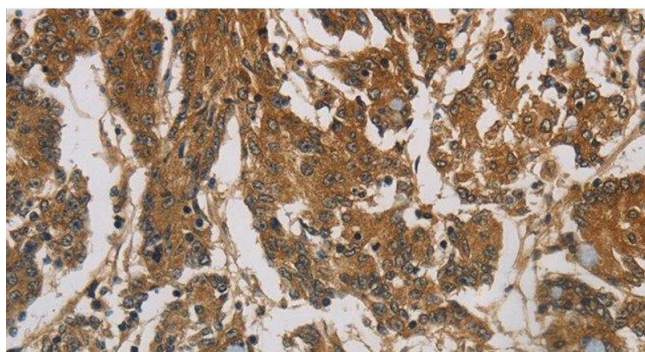
Application Details

Application Notes:	WB 1:500-1:2000, IHC 1:100-1:300
Restrictions:	For Research Use only

Handling

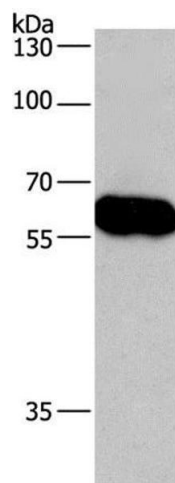
Format:	Liquid
Concentration:	0.6 mg/mL
Buffer:	PBS with 0.05 % sodium azide and 50 % glycerol, PH7.4
Preservative:	Sodium azide
Precaution of Use:	This product contains Sodium azide: a POISONOUS AND HAZARDOUS SUBSTANCE which should be handled by trained staff only.
Storage:	-20 °C
Storage Comment:	Store at -20°C. Avoid freeze / thaw cycles.

Images



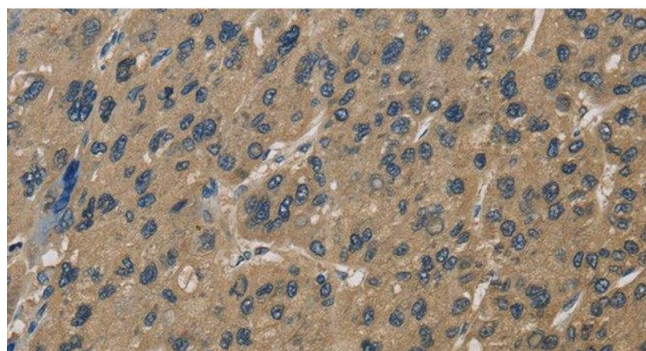
Immunohistochemistry (Paraffin-embedded Sections)

Image 1. Immunohistochemistry of paraffin-embedded Human colon cancer using COR01C Polyclonal Antibody at dilution of 1:60



Western Blotting

Image 2. Western Blot analysis of Lovo cell using CORO1C Polyclonal Antibody at dilution of 1:670



Immunohistochemistry (Paraffin-embedded Sections)

Image 3. Immunohistochemistry of paraffin-embedded Human liver cancer using CORO1C Polyclonal Antibody at dilution of 1:60