



## Datasheet for ABIN7236661 anti-CPB1 antibody



[Go to Product page](#)

### 3 Images

#### Overview

Quantity:	200 µL
Target:	CPB1
Reactivity:	Human, Rat
Host:	Rabbit
Clonality:	Polyclonal
Conjugate:	This CPB1 antibody is un-conjugated
Application:	Immunohistochemistry (IHC), ELISA

#### Product Details

Immunogen:	Recombinant protein of human CPB1
Isotype:	IgG
Characteristics:	Polyclonal Antibody
Purification:	Affinity purification

#### Target Details

Target:	CPB1
Alternative Name:	CPB1 ( <a href="#">CPB1 Products</a> )
Background:	<p>Three different procarboxypeptidases A and two different procarboxypeptidases B have been isolated. The B1 and B2 forms differ from each other mainly in isoelectric point.</p> <p>Carboxypeptidase B1 is a highly tissue-specific protein and is a useful serum marker for acute pancreatitis and dysfunction of pancreatic transplants. It is not elevated in pancreatic</p>

## Target Details

carcinoma.

UniProt: [P15086](#)

## Application Details

Application Notes: IHC 1:100-1:300

Restrictions: For Research Use only

## Handling

Format: Liquid

Concentration: 0.5 mg/mL

Buffer: PBS with 0.05 % sodium azide and 50 % glycerol, PH7.4

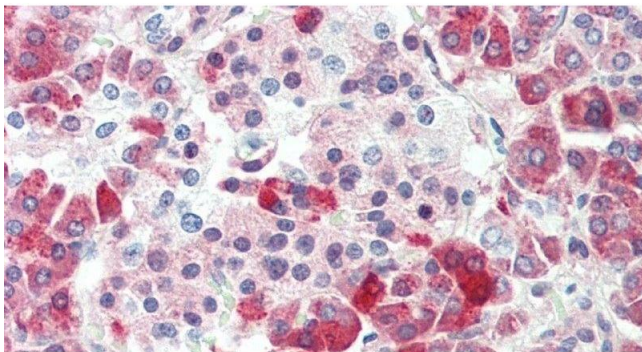
Preservative: Sodium azide

Precaution of Use: This product contains Sodium azide: a POISONOUS AND HAZARDOUS SUBSTANCE which should be handled by trained staff only.

Storage: -20 °C

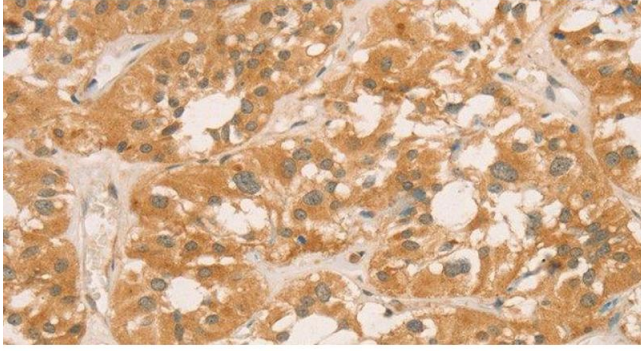
Storage Comment: Store at -20°C. Avoid freeze / thaw cycles.

## Images



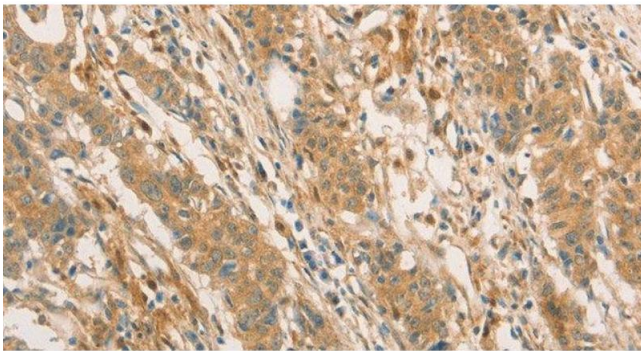
### Immunohistochemistry (Paraffin-embedded Sections)

**Image 1.** Immunohistochemistry of paraffin-embedded Human gastric cancer using CPB1 Polyclonal Antibody at dilution of 1:60.



#### Immunohistochemistry (Paraffin-embedded Sections)

**Image 2.** Immunohistochemistry of paraffin-embedded Human thyroid cancer tissue using CPB1 Polyclonal Antibody at dilution of 1:60



#### Immunohistochemistry (Paraffin-embedded Sections)

**Image 3.** Immunohistochemistry of paraffin-embedded Human gastric cancer using CPB1 Polyclonal Antibody at dilution of 1:60