

Datasheet for ABIN7236673

**anti-c-Rel antibody**

3 Images

[Go to Product page](#)

## Overview

Quantity:	200 µL
Target:	c-Rel
Reactivity:	Human
Host:	Rabbit
Clonality:	Polyclonal
Conjugate:	This c-Rel antibody is un-conjugated
Application:	Western Blotting (WB), ELISA, Immunohistochemistry (IHC)

## Product Details

Immunogen:	Recombinant protein of human REL
Isotype:	IgG
Characteristics:	Polyclonal Antibody
Purification:	Affinity purification

## Target Details

Target:	c-Rel
Alternative Name:	c-Rel ( <a href="#">c-Rel Products</a> )
Background:	The REL gene encodes c-Rel, a transcription factor that is a member of the Rel/NFκB family, which also includes RELA (MIM 164014), RELB (604758), NFκB1 (MIM 164011), and NFκB2 (MIM 164012). These proteins are related through a highly conserved N-terminal region termed the 'Rel domain,' which is responsible for DNA binding, dimerization, nuclear localization, and

## Target Details

	binding to the NFkB inhibitor
Molecular Weight:	69 kDa
NCBI Accession:	<a href="#">NP_002899</a>
UniProt:	<a href="#">Q04864</a>

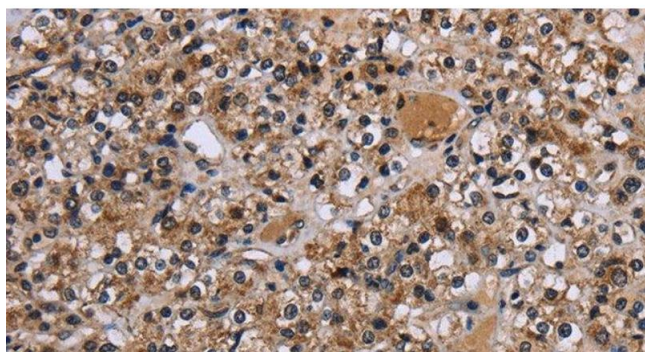
## Application Details

Application Notes:	WB 1:500-1:2000, IHC 1:50-1:200
Restrictions:	For Research Use only

## Handling

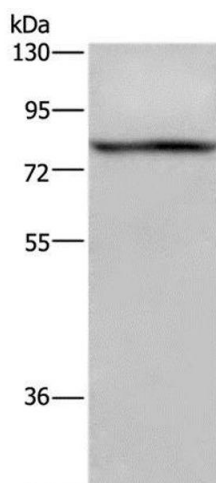
Format:	Liquid
Concentration:	0.4 mg/mL
Buffer:	PBS with 0.05 % sodium azide and 50 % glycerol, PH7.4
Preservative:	Sodium azide
Precaution of Use:	This product contains Sodium azide: a POISONOUS AND HAZARDOUS SUBSTANCE which should be handled by trained staff only.
Storage:	-20 °C
Storage Comment:	Store at -20°C. Avoid freeze / thaw cycles.

## Images



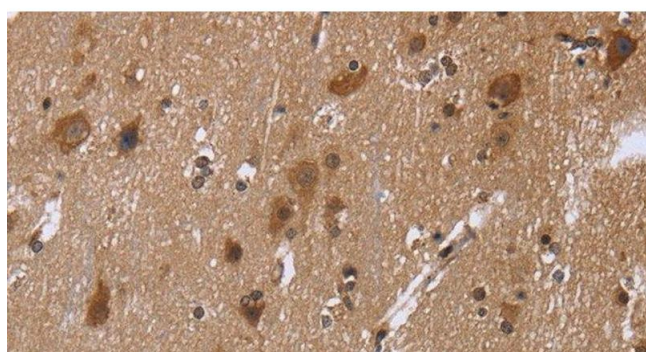
### Immunohistochemistry (Paraffin-embedded Sections)

**Image 1.** Immunohistochemistry of paraffin-embedded Human prostate cancer using c-Rel Polyclonal Antibody at dilution of 1:30



### Western Blotting

**Image 2.** Western Blot analysis of 293T cell using c-Rel Polyclonal Antibody at dilution of 1:950



### Immunohistochemistry (Paraffin-embedded Sections)

**Image 3.** Immunohistochemistry of paraffin-embedded Human brain using c-Rel Polyclonal Antibody at dilution of 1:30