



[Go to Product page](#)

Datasheet for ABIN7236717

anti-PPIF antibody

3 Images

Overview

Quantity:	200 µL
Target:	PPIF
Reactivity:	Human, Mouse, Rat
Host:	Rabbit
Clonality:	Polyclonal
Application:	Western Blotting (WB), Immunohistochemistry (IHC), ELISA

Product Details

Immunogen:	Recombinant protein of human PPIF
Isotype:	IgG
Characteristics:	Polyclonal Antibody
Purification:	Affinity purification

Target Details

Target:	PPIF
Alternative Name:	Cyclophilin F (PPIF Products)
Background:	The protein encoded by this gene is a member of the peptidyl-prolyl cis-trans isomerase (PPIase) family. PPIases catalyze the cis-trans isomerization of proline imidic peptide bonds in oligopeptides and accelerate the folding of proteins. This protein is part of the mitochondrial permeability transition pore in the inner mitochondrial membrane. Activation of this pore is thought to be involved in the induction of apoptotic and necrotic cell death.

Target Details

Molecular Weight:	22 kDa
UniProt:	P30405
Pathways:	Proton Transport , Negative Regulation of intrinsic apoptotic Signaling , Negative Regulation of Transporter Activity

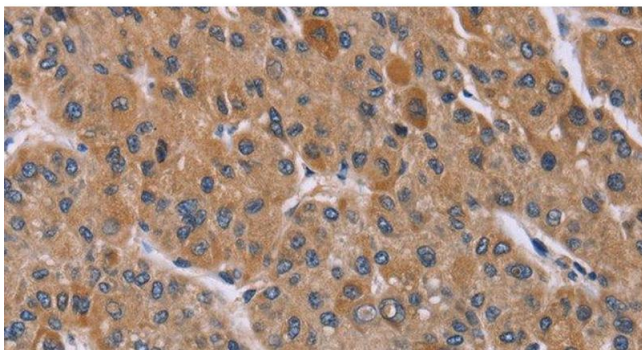
Application Details

Application Notes:	WB 1:500-1:2000, IHC 1:100-1:300
Restrictions:	For Research Use only

Handling

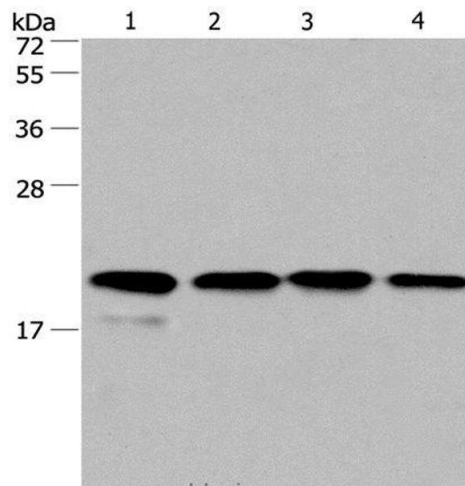
Format:	Liquid
Concentration:	0.4 mg/mL
Buffer:	PBS with 0.05 % sodium azide and 50 % glycerol, PH7.4
Preservative:	Sodium azide
Precaution of Use:	This product contains Sodium azide: a POISONOUS AND HAZARDOUS SUBSTANCE which should be handled by trained staff only.
Storage:	-20 °C
Storage Comment:	Store at -20°C. Avoid freeze / thaw cycles.

Images



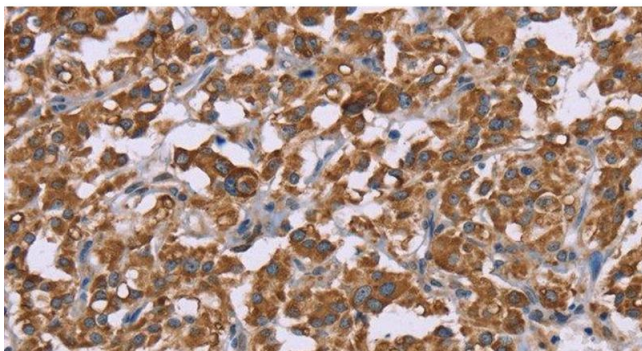
Immunohistochemistry (Paraffin-embedded Sections)

Image 1. Immunohistochemistry of paraffin-embedded Human liver cancer using Cyclophilin F Polyclonal Antibody at dilution of 1:45



Western Blotting

Image 2. Western Blot analysis of PC3 and 293T cell, Human liver cancer tissue and HeLa cell using Cyclophilin F Polyclonal Antibody at dilution of 1:500



Immunohistochemistry (Paraffin-embedded Sections)

Image 3. Immunohistochemistry of paraffin-embedded Human thyroid cancer using Cyclophilin F Polyclonal Antibody at dilution of 1:45