

Datasheet for ABIN7236721

**anti-CYP2E1 antibody****2** Images[Go to Product page](#)

## Overview

|              |  |
|--------------|--|
| Quantity:    | 200 µL   |
| Target:      | CYP2E1   |
| Reactivity:  | Human, Mouse, Rat  |
| Host:        | Rabbit   |
| Clonality:   | Polyclonal   |
| Application: | Western Blotting (WB), Immunohistochemistry (IHC), ELISA |

## Product Details

|                  |                                     |
|------------------|-------------------------------------|
| Immunogen:       | Recombinant protein of human CYP2E1 |
| Isotype:         | IgG                                 |
| Characteristics: | Polyclonal Antibody                 |
| Purification:    | Affinity purification               |

## Target Details

|                   |   |
|-------------------|---|
| Target:           | CYP2E1  |
| Alternative Name: | CYP2E1 ( <a href="#">CYP2E1 Products</a> )  |
| Background:       | <p>This gene encodes a member of the cytochrome P450 superfamily of enzymes. The cytochrome P450 proteins are monooxygenases which catalyze many reactions involved in drug metabolism and synthesis of cholesterol, steroids and other lipids. This protein localizes to the endoplasmic reticulum and is induced by ethanol, the diabetic state, and starvation. The enzyme metabolizes both endogenous substrates, such as ethanol, acetone, and acetal, as well</p> |

## Target Details

as exogenous substrates including benzene, carbon tetrachloride, ethylene glycol, and nitrosamines which are premutagens found in cigarette smoke. Due to its many substrates, this enzyme may be involved in such varied processes as gluconeogenesis, hepatic cirrhosis, diabetes, and cancer.

Molecular Weight: 57 kDa

UniProt: [P05181](#)

## Application Details

Application Notes: WB 1:500-1:2000, IHC 1:25-1:100

Restrictions: For Research Use only

## Handling

Format: Liquid

Concentration: 0.5 mg/mL

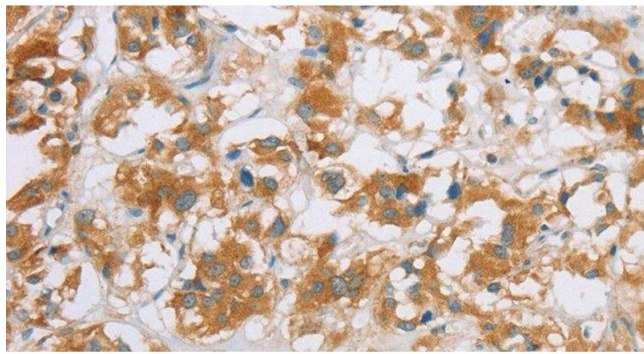
Buffer: PBS with 0.05 % sodium azide and 50 % glycerol, PH7.4

Preservative: Sodium azide

Precaution of Use: This product contains Sodium azide: a POISONOUS AND HAZARDOUS SUBSTANCE which should be handled by trained staff only.

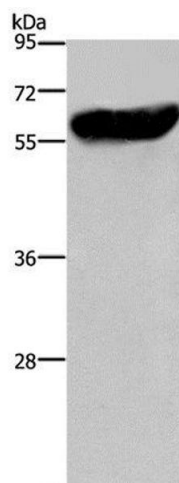
Storage: -20 °C

Storage Comment: Store at -20°C. Avoid freeze / thaw cycles.



#### Immunohistochemistry (Paraffin-embedded Sections)

**Image 1.** Immunohistochemistry of paraffin-embedded Human thyroid cancer using CYP2E1 Polyclonal Antibody at dilution of 1:35



#### Western Blotting

**Image 2.** Western Blot analysis of Mouse liver tissue using CYP2E1 Polyclonal Antibody at dilution of 1:300