

Datasheet for ABIN7236754

**anti-CYR61 antibody****3** Images[Go to Product page](#)

## Overview

Quantity:	200 µL
Target:	CYR61
Reactivity:	Human, Mouse, Rat
Host:	Rabbit
Clonality:	Polyclonal
Conjugate:	This CYR61 antibody is un-conjugated
Application:	Western Blotting (WB), Immunohistochemistry (IHC), ELISA

## Product Details

Immunogen:	Recombinant protein of human CYR61
Isotype:	IgG
Characteristics:	Polyclonal Antibody
Purification:	Affinity purification

## Target Details

Target:	CYR61
Alternative Name:	CYR61 ( <a href="#">CYR61 Products</a> )
Background:	The secreted protein encoded by this gene is growth factor-inducible and promotes the adhesion of endothelial cells. The encoded protein interacts with several integrins and with heparan sulfate proteoglycan. This protein also plays a role in cell proliferation, differentiation, angiogenesis, apoptosis, and extracellular matrix formation.

## Target Details

Molecular Weight:	42 kDa
UniProt:	<a href="#">O00622</a>
Pathways:	<a href="#">Positive Regulation of Endopeptidase Activity</a> , <a href="#">Growth Factor Binding</a>

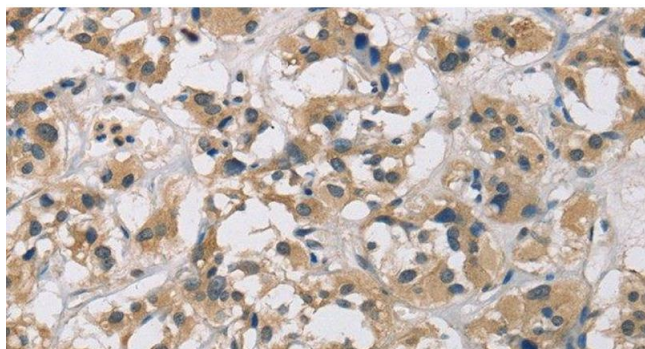
## Application Details

Application Notes:	WB 1:200-1:1000, IHC 1:50-1:200
Restrictions:	For Research Use only

## Handling

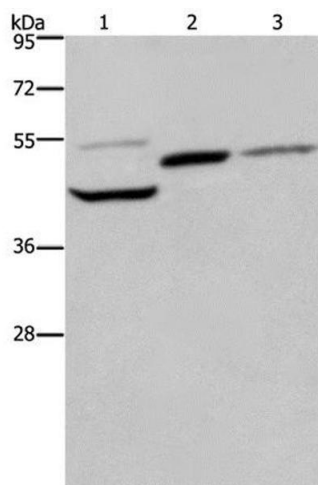
Format:	Liquid
Concentration:	0.8 mg/mL
Buffer:	PBS with 0.05 % sodium azide and 50 % glycerol, PH7.4
Preservative:	Sodium azide
Precaution of Use:	This product contains Sodium azide: a POISONOUS AND HAZARDOUS SUBSTANCE which should be handled by trained staff only.
Storage:	-20 °C
Storage Comment:	Store at -20°C. Avoid freeze / thaw cycles.

## Images



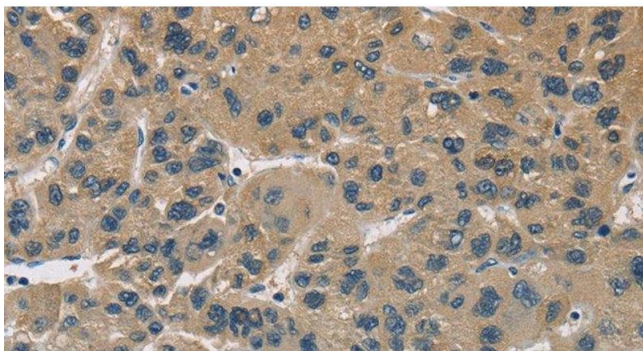
### Immunohistochemistry (Paraffin-embedded Sections)

**Image 1.** Immunohistochemistry of paraffin-embedded Human thyroid cancer using CYR61 Polyclonal Antibody at dilution of 1:60



### Western Blotting

**Image 2.** Western Blot analysis of Mouse heart, kidney and liver tissue using CYR61 Polyclonal Antibody at dilution of 1:350



### Immunohistochemistry (Paraffin-embedded Sections)

**Image 3.** Immunohistochemistry of paraffin-embedded Human liver cancer using CYR61 Polyclonal Antibody at dilution of 1:60