

Datasheet for ABIN7236778

anti-DBH antibody

3 Images

[Go to Product page](#)

Overview

Quantity:	200 µL
Target:	DBH
Reactivity:	Human, Mouse
Host:	Rabbit
Clonality:	Polyclonal
Conjugate:	This DBH antibody is un-conjugated
Application:	Western Blotting (WB), Immunohistochemistry (IHC), ELISA

Product Details

Immunogen:	Recombinant protein of human DBH
Isotype:	IgG
Characteristics:	Polyclonal Antibody
Purification:	Affinity purification

Target Details

Target:	DBH
Alternative Name:	DBH (DBH Products)
Background:	The protein encoded by this gene is an oxidoreductase belonging to the copper type II, ascorbate-dependent monooxygenase family. It is present in the synaptic vesicles of postganglionic sympathetic neurons and converts dopamine to norepinephrine. It exists in both soluble and membrane-bound forms, depending on the absence or presence, respectively, of a

Target Details

	signal peptide.
Molecular Weight:	69 kDa
UniProt:	P09172
Pathways:	Carbohydrate Homeostasis

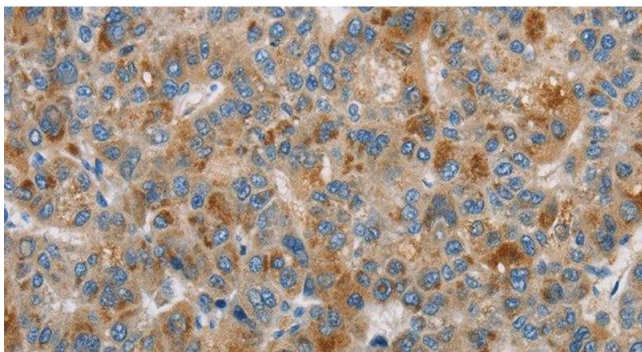
Application Details

Application Notes:	WB 1:200-1:1000, IHC 1:100-1:300
Restrictions:	For Research Use only

Handling

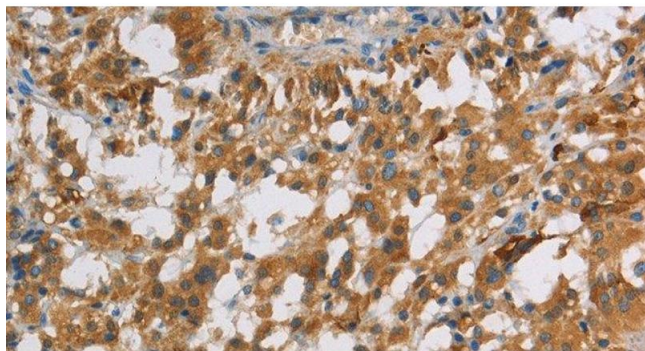
Format:	Liquid
Concentration:	0.6 mg/mL
Buffer:	PBS with 0.05 % sodium azide and 50 % glycerol, PH7.4
Preservative:	Sodium azide
Precaution of Use:	This product contains Sodium azide: a POISONOUS AND HAZARDOUS SUBSTANCE which should be handled by trained staff only.
Storage:	-20 °C
Storage Comment:	Store at -20°C. Avoid freeze / thaw cycles.

Images



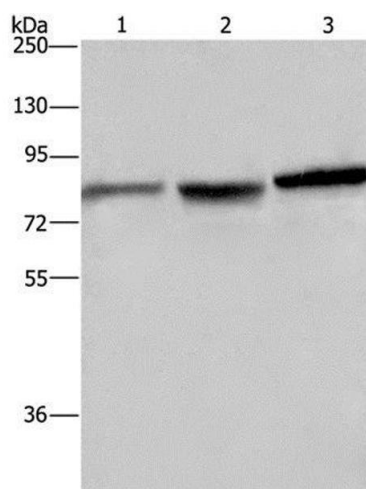
Immunohistochemistry (Paraffin-embedded Sections)

Image 1. Immunohistochemistry of paraffin-embedded Human liver cancer using DBH Polyclonal Antibody at dilution of 1:70



Immunohistochemistry (Paraffin-embedded Sections)

Image 2. Immunohistochemistry of paraffin-embedded Human thyroid cancer using DBH Polyclonal Antibody at dilution of 1:70



Western Blotting

Image 3. Western Blot analysis of Mouse brain tissue, A172 and Hela cell using DBH Polyclonal Antibody at dilution of 1:200