



Datasheet for ABIN7236806
anti-Desmoglein 2 antibody



[Go to Product page](#)

4 Images

Overview

| | |
|--------------|---|
| Quantity: | 200 µL |
| Target: | Desmoglein 2 (DSG2) |
| Reactivity: | Human |
| Host: | Rabbit |
| Clonality: | Polyclonal |
| Conjugate: | This Desmoglein 2 antibody is un-conjugated |
| Application: | ELISA, Immunohistochemistry (IHC) |

Product Details

| | |
|------------------|-----------------------------------|
| Immunogen: | Recombinant protein of human DSG2 |
| Isotype: | IgG |
| Characteristics: | Polyclonal Antibody |
| Purification: | Affinity purification |

Target Details

| | |
|-------------------|---|
| Target: | Desmoglein 2 (DSG2) |
| Alternative Name: | DSG2 (DSG2 Products) |
| Background: | Desmosomes are cell-cell junctions between epithelial, myocardial, and certain other cell types. This gene product is a calcium-binding transmembrane glycoprotein component of desmosomes in vertebrate epithelial cells. Currently, three desmoglein subfamily members have been identified and all are members of the cadherin cell adhesion molecule superfamily. |

Target Details

These desmoglein gene family members are located in a cluster on chromosome 18. This second family member is expressed in colon, colon carcinoma, and other simple and stratified epithelial-derived cell lines.

UniProt: [Q14126](#)

Pathways: [Cell-Cell Junction Organization](#)

Application Details

Application Notes: IHC 1:50-1:200

Restrictions: For Research Use only

Handling

Format: Liquid

Concentration: 0.6 mg/mL

Buffer: PBS with 0.05 % sodium azide and 50 % glycerol, PH7.4

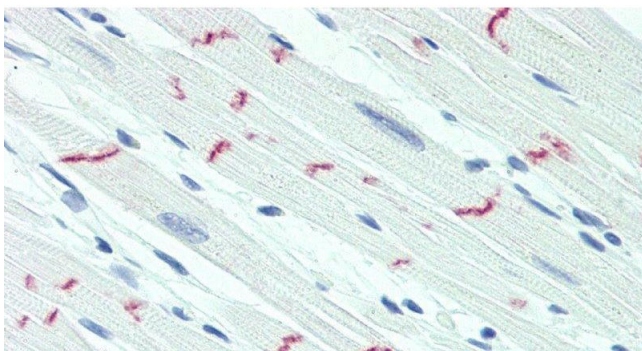
Preservative: Sodium azide

Precaution of Use: This product contains Sodium azide: a POISONOUS AND HAZARDOUS SUBSTANCE which should be handled by trained staff only.

Storage: -20 °C

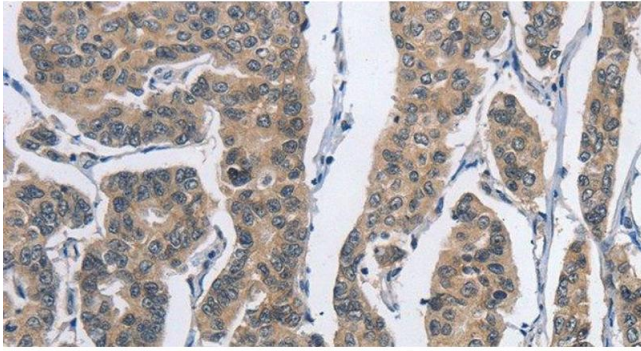
Storage Comment: Store at -20°C. Avoid freeze / thaw cycles.

Images



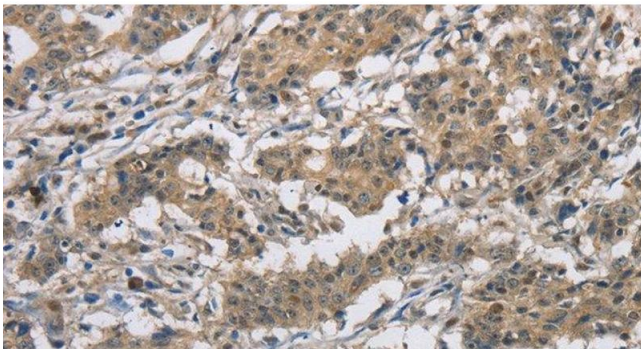
Immunohistochemistry (Paraffin-embedded Sections)

Image 1. Immunohistochemistry of paraffin-embedded Heart tissue using DSG2 Polyclonal Antibody at dilution of 1:60.



Immunohistochemistry (Paraffin-embedded Sections)

Image 2. Immunohistochemistry of paraffin-embedded Human breast cancer tissue using DSG2 Polyclonal Antibody at dilution 1:50



Immunohistochemistry (Paraffin-embedded Sections)

Image 3. Immunohistochemistry of paraffin-embedded Human gastric cancer tissue using DSG2 Polyclonal Antibody at dilution 1:50

Please check the [product details page](#) for more images. Overall 4 images are available for ABIN7236806.