

Datasheet for ABIN7236830
anti-DNASE1L3 antibody



[Go to Product page](#)

1 Image

Overview

Quantity:	200 µL
Target:	DNASE1L3
Reactivity:	Human, Rat, Mouse
Host:	Rabbit
Clonality:	Polyclonal
Conjugate:	This DNASE1L3 antibody is un-conjugated
Application:	Western Blotting (WB), ELISA

Product Details

Immunogen:	Recombinant protein of human DNASE1L3
Isotype:	IgG
Characteristics:	Polyclonal Antibody
Purification:	Affinity purification

Target Details

Target:	DNASE1L3
Alternative Name:	DNASE1L3 (DNASE1L3 Products)
Background:	<p>This gene encodes a member of the deoxyribonuclease I family. The encoded protein hydrolyzes DNA, is not inhibited by actin, and mediates the breakdown of DNA during apoptosis. Mutations in this gene are a cause of systemic lupus erythematosus-16.</p> <p>Alternatively spliced transcript variants encoding multiple isoforms have been observed for this</p>

Target Details

	gene.
Molecular Weight:	36 kDa
UniProt:	Q13609

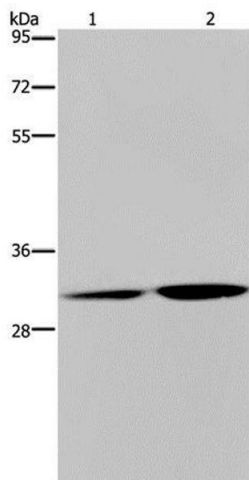
Application Details

Application Notes:	WB 1:500-1:2000
Restrictions:	For Research Use only

Handling

Format:	Liquid
Concentration:	0.5 mg/mL
Buffer:	PBS with 0.05 % sodium azide and 50 % glycerol, PH7.4
Preservative:	Sodium azide
Precaution of Use:	This product contains Sodium azide: a POISONOUS AND HAZARDOUS SUBSTANCE which should be handled by trained staff only.
Storage:	-20 °C
Storage Comment:	Store at -20°C. Avoid freeze / thaw cycles.

Images



Western Blotting

Image 1. Western Blot analysis of HT-29 cell and Human placenta tissue using DNASE1L3 Polyclonal Antibody at dilution of 1:450