

## Datasheet for ABIN7236834 **anti-DP1 antibody**



[Go to Product page](#)

### 1 Image

#### Overview

Quantity:	200 µL
Target:	DP1 (TFDP1)
Reactivity:	Human, Mouse
Host:	Rabbit
Clonality:	Polyclonal
Conjugate:	This DP1 antibody is un-conjugated
Application:	Western Blotting (WB), ELISA

#### Product Details

Immunogen:	Recombinant protein of human TFDP1
Isotype:	IgG
Characteristics:	Polyclonal Antibody
Purification:	Affinity purification

#### Target Details

Target:	DP1 (TFDP1)
Alternative Name:	TFDP1 ( <a href="#">TFDP1 Products</a> )
Background:	This gene encodes a member of a family of transcription factors that heterodimerize with E2F proteins to enhance their DNA-binding activity and promote transcription from E2F target genes. The encoded protein functions as part of this complex to control the transcriptional activity of numerous genes involved in cell cycle progression from G1 to S phase. Alternative

## Target Details

---

splicing results in multiple transcript variants. Pseudogenes of this gene are found on chromosomes 1, 15, and X.

Molecular Weight: 45 kDa

NCBI Accession: [NP\\_009042](#)

UniProt: [Q14186](#)

Pathways: [Cell Division Cycle, Mitotic G1-G1/S Phases](#)

## Application Details

---

Application Notes: WB 1:500-1:2000

Restrictions: For Research Use only

## Handling

---

Format: Liquid

Concentration: 0.7 mg/mL

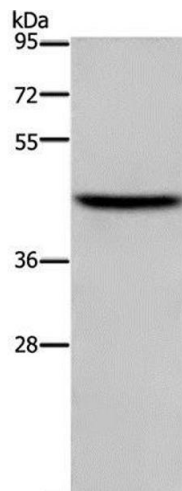
Buffer: PBS with 0.05 % sodium azide and 50 % glycerol, PH7.4

Preservative: Sodium azide

Precaution of Use: This product contains Sodium azide: a POISONOUS AND HAZARDOUS SUBSTANCE which should be handled by trained staff only.

Storage: -20 °C

Storage Comment: Store at -20°C. Avoid freeze / thaw cycles.



### Western Blotting

**Image 1.** Western Blot analysis of NIH/3T3 cell using TFDP1 Polyclonal Antibody at dilution of 1:650