



[Go to Product page](#)

Datasheet for ABIN7236854

## anti-ECE1 antibody

### 3 Images

#### Overview

Quantity:	200 µL
Target:	ECE1
Reactivity:	Human, Mouse
Host:	Rabbit
Clonality:	Polyclonal
Conjugate:	This ECE1 antibody is un-conjugated
Application:	Western Blotting (WB), Immunohistochemistry (IHC), ELISA

#### Product Details

Immunogen:	Recombinant protein of human ECE1
Isotype:	IgG
Characteristics:	Polyclonal Antibody
Purification:	Affinity purification

#### Target Details

Target:	ECE1
Alternative Name:	ECE1 ( <a href="#">ECE1 Products</a> )
Background:	The protein encoded by this gene is involved in proteolytic processing of endothelin precursors to biologically active peptides. Mutations in this gene are associated with Hirschsprung disease, cardiac defects and autonomic dysfunction. Alternatively spliced transcript variants encoding different isoforms have been noted for this gene.

## Target Details

Molecular Weight:	87 kDa
UniProt:	<a href="#">P42892</a>
Pathways:	<a href="#">Regulation of Systemic Arterial Blood Pressure by Hormones</a> , <a href="#">cAMP Metabolic Process</a> , <a href="#">Regulation of G-Protein Coupled Receptor Protein Signaling</a>

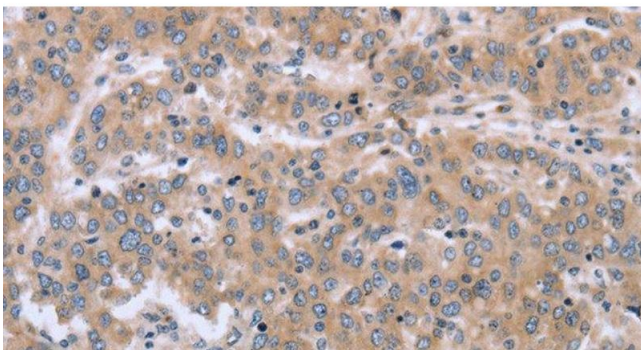
## Application Details

Application Notes:	WB 1:500-1:2000, IHC 1:25-1:100
Restrictions:	For Research Use only

## Handling

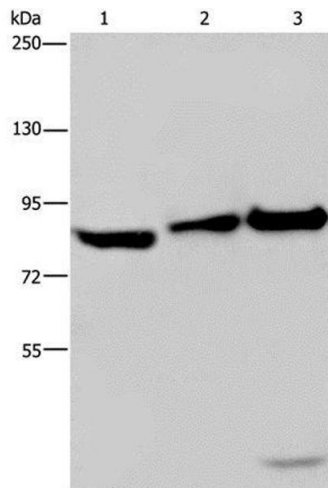
Format:	Liquid
Concentration:	0.5 mg/mL
Buffer:	PBS with 0.05 % sodium azide and 50 % glycerol, PH7.4
Preservative:	Sodium azide
Precaution of Use:	This product contains Sodium azide: a POISONOUS AND HAZARDOUS SUBSTANCE which should be handled by trained staff only.
Storage:	-20 °C
Storage Comment:	Store at -20°C. Avoid freeze / thaw cycles.

## Images



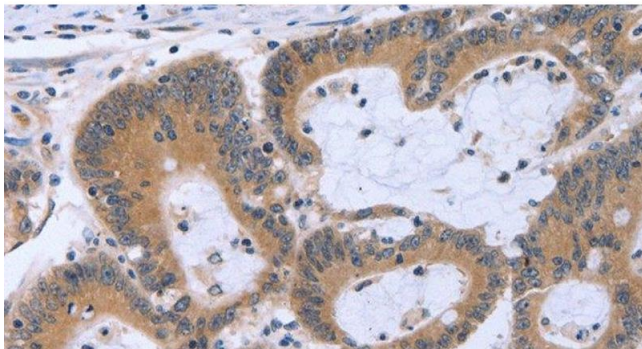
### Immunohistochemistry (Paraffin-embedded Sections)

**Image 1.** Immunohistochemistry of paraffin-embedded Human liver cancer using MAPRE3 Polyclonal Antibody at dilution of 1:30



### Western Blotting

**Image 2.** Western Blot analysis of NIH/3T3 cell, Mouse lung and liver tissue using MAPRE3 Polyclonal Antibody at dilution of 1:550



### Immunohistochemistry (Paraffin-embedded Sections)

**Image 3.** Immunohistochemistry of paraffin-embedded Human colon cancer using MAPRE3 Polyclonal Antibody at dilution of 1:30