



## Datasheet for ABIN7236895 anti-Endothelin 2 antibody



[Go to Product page](#)

### 3 Images

#### Overview

Quantity:	200 µL
Target:	Endothelin 2 (EDN2)
Reactivity:	Human
Host:	Rabbit
Clonality:	Polyclonal
Conjugate:	This Endothelin 2 antibody is un-conjugated
Application:	ELISA, Immunohistochemistry (IHC), Western Blotting (WB)

#### Product Details

Immunogen:	Recombinant protein of human EDN2
Isotype:	IgG
Characteristics:	Polyclonal Antibody
Purification:	Affinity purification

#### Target Details

Target:	Endothelin 2 (EDN2)
Alternative Name:	EDN2 ( <a href="#">EDN2 Products</a> )
Background:	This gene encodes a member of the endothelin protein family of secretory vasoconstrictive peptides. The preproprotein is processed to a short mature form which functions as a ligand for the endothelin receptors that initiate intracellular signaling events. This gene product is involved in a wide range of biological processes, such as hypertension and ovulation.

## Target Details

Molecular Weight:	20 kDa
UniProt:	<a href="#">P20800</a>
Pathways:	<a href="#">Hormone Activity</a> , <a href="#">Negative Regulation of Hormone Secretion</a> , <a href="#">Regulation of Systemic Arterial Blood Pressure by Hormones</a>

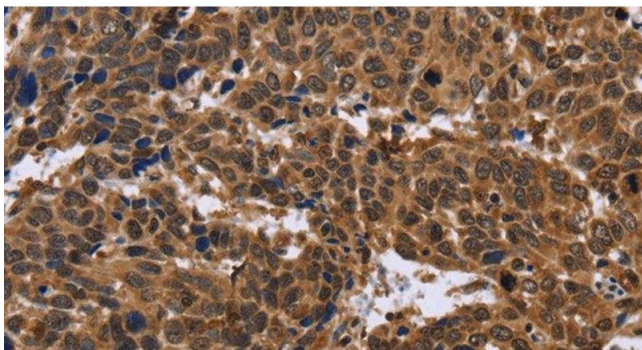
## Application Details

Application Notes:	WB 1:500-1:2000, IHC 1:50-1:200
Restrictions:	For Research Use only

## Handling

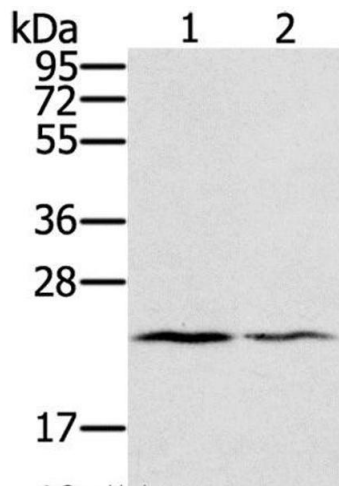
Format:	Liquid
Concentration:	0.5 mg/mL
Buffer:	PBS with 0.05 % sodium azide and 50 % glycerol, PH7.4
Preservative:	Sodium azide
Precaution of Use:	This product contains Sodium azide: a POISONOUS AND HAZARDOUS SUBSTANCE which should be handled by trained staff only.
Storage:	-20 °C
Storage Comment:	Store at -20°C. Avoid freeze / thaw cycles.

## Images



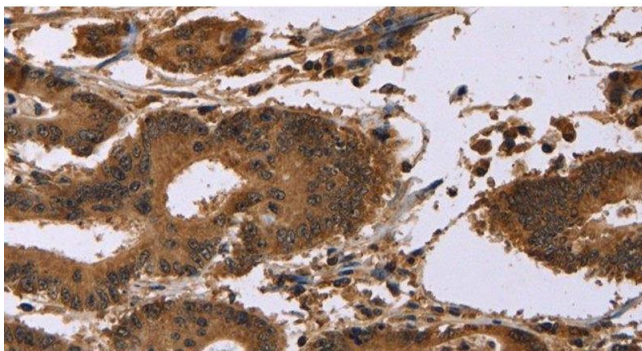
### Immunohistochemistry (Paraffin-embedded Sections)

**Image 1.** Immunohistochemistry of paraffin-embedded Human cervical cancer using EDN2 Polyclonal Antibody at dilution of 1:30



### Western Blotting

**Image 2.** Western Blot analysis of Human normal right lung and normal left lung tissue using EDN2 Polyclonal Antibody at dilution of 1:600



### Immunohistochemistry (Paraffin-embedded Sections)

**Image 3.** Immunohistochemistry of paraffin-embedded Human colon cancer using EDN2 Polyclonal Antibody at dilution of 1:30