

Datasheet for ABIN7236964

**anti-MYL12B antibody**[Go to Product page](#)**1** Image

## Overview

Quantity:	200 µL
Target:	MYL12B
Reactivity:	Human, Mouse, Rat
Host:	Rabbit
Clonality:	Polyclonal
Conjugate:	This MYL12B antibody is un-conjugated
Application:	Western Blotting (WB), ELISA

## Product Details

Immunogen:	Recombinant protein of human MYL12B
Isotype:	IgG
Characteristics:	Polyclonal Antibody
Purification:	Affinity purification

## Target Details

Target:	MYL12B
Alternative Name:	MYL12B ( <a href="#">MYL12B Products</a> )
Background:	The activity of nonmuscle myosin II (see MYH9, MIM 160775) is regulated by phosphorylation of a regulatory light chain, such as MRLC2. This phosphorylation results in higher MgATPase activity and the assembly of myosin II filaments

## Target Details

Molecular Weight:	20 kDa
UniProt:	<a href="#">O14950</a>
Pathways:	<a href="#">Feeding Behaviour</a>

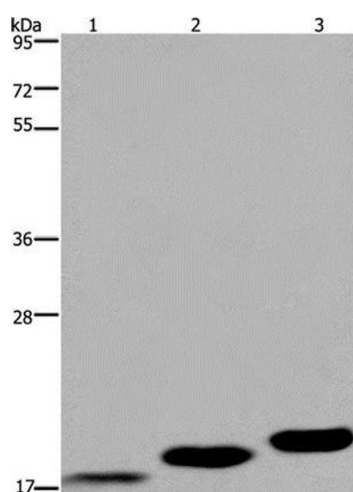
## Application Details

Application Notes:	WB 1:500-1:2000
Restrictions:	For Research Use only

## Handling

Format:	Liquid
Concentration:	0.5 mg/mL
Buffer:	PBS with 0.05 % sodium azide and 50 % glycerol, PH7.4
Preservative:	Sodium azide
Precaution of Use:	This product contains Sodium azide: a POISONOUS AND HAZARDOUS SUBSTANCE which should be handled by trained staff only.
Storage:	-20 °C
Storage Comment:	Store at -20°C. Avoid freeze / thaw cycles.

## Images



### Western Blotting

**Image 1.** Western Blot analysis of Mouse skeletal muscle, heart and bladder tissue using MYL12B Polyclonal Antibody at dilution of 1:450