



Datasheet for ABIN7236972  
**anti-FASTKD5 antibody**



[Go to Product page](#)

2 Images

Overview

Quantity:	200 µL
Target:	FASTKD5
Reactivity:	Human
Host:	Rabbit
Clonality:	Polyclonal
Conjugate:	This FASTKD5 antibody is un-conjugated
Application:	ELISA, Immunohistochemistry (IHC)

Product Details

Immunogen:	Recombinant protein of human FASTKD5
Isotype:	IgG
Characteristics:	Polyclonal Antibody
Purification:	Affinity purification

Target Details

Target:	FASTKD5
Alternative Name:	FASTKD5 ( <a href="#">FASTKD5 Products</a> )
Background:	Representing about 2 % of human DNA, chromosome 20 consists of approximately 63 million bases and 600 genes. Chromosome 20 contains a region with numerous genes expressed in the epididymis which are thought important for seminal production and some viewed as potential targets for male contraception. The PRNP gene encoding the prion protein associated

## Target Details

---

with spongiform encephalopathies, like Creutzfeldt-Jakob disease, is found on chromosome 20. Amyotrophic lateral sclerosis, spinal muscular atrophy, ring chromosome 20 epilepsy syndrome and Alagille syndrome are also associated with chromosome 20.

NCBI Accession: [NP\\_068598](#)

UniProt: [Q7L8L6](#)

Pathways: [SARS-CoV-2 Protein Interactome](#)

## Application Details

---

Application Notes: IHC 1:50-1:200

Restrictions: For Research Use only

## Handling

---

Format: Liquid

Concentration: 0.6 mg/mL

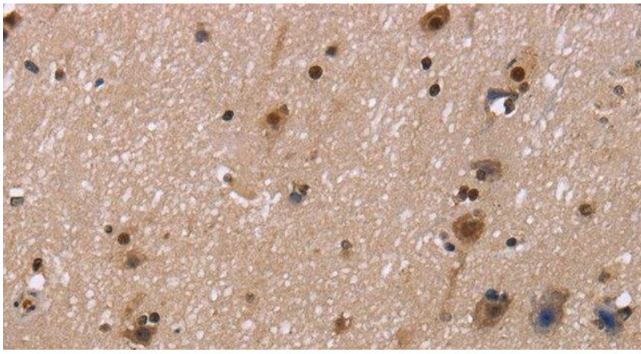
Buffer: PBS with 0.05 % sodium azide and 50 % glycerol, PH7.4

Preservative: Sodium azide

Precaution of Use: This product contains Sodium azide: a POISONOUS AND HAZARDOUS SUBSTANCE which should be handled by trained staff only.

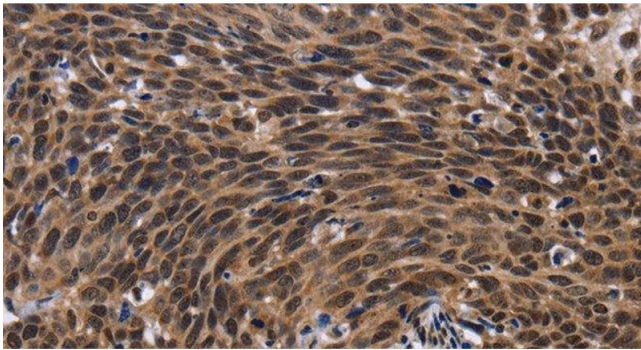
Storage: -20 °C

Storage Comment: Store at -20°C. Avoid freeze / thaw cycles.



#### Immunohistochemistry (Paraffin-embedded Sections)

**Image 1.** Immunohistochemistry of paraffin-embedded Human brain tissue using FASTKD5 Polyclonal Antibody at dilution 1:40



#### Immunohistochemistry (Paraffin-embedded Sections)

**Image 2.** Immunohistochemistry of paraffin-embedded Human cervical cancer tissue using FASTKD5 Polyclonal Antibody at dilution 1:40