

Datasheet for ABIN7237000

anti-FGFR1 antibody

3 Images

[Go to Product page](#)

Overview

Quantity:	200 µL
Target:	FGFR1
Reactivity:	Human, Mouse, Rat
Host:	Rabbit
Clonality:	Polyclonal
Conjugate:	This FGFR1 antibody is un-conjugated
Application:	Western Blotting (WB), Immunohistochemistry (IHC), ELISA

Product Details

Immunogen:	Recombinant protein of human FGFR1
Isotype:	IgG
Characteristics:	Polyclonal Antibody
Purification:	Affinity purification

Target Details

Target:	FGFR1
Alternative Name:	FGFR1 (FGFR1 Products)
Background:	The protein encoded by this gene is a member of the fibroblast growth factor receptor (FGFR) family, where amino acid sequence is highly conserved between members and throughout evolution. FGFR family members differ from one another in their ligand affinities and tissue distribution. A full-length representative protein would consist of an extracellular region,

Target Details

composed of three immunoglobulin-like domains, a single hydrophobic membrane-spanning segment and a cytoplasmic tyrosine kinase domain. The extracellular portion of the protein interacts with fibroblast growth factors, setting in motion a cascade of downstream signals, ultimately influencing mitogenesis and differentiation. A marked difference between this gene product and the other family members is its lack of a cytoplasmic tyrosine kinase domain. The result is a transmembrane receptor that could interact with other family members and potentially inhibit signaling. Multiple alternatively spliced transcript variants encoding the same isoform have been found for this gene.

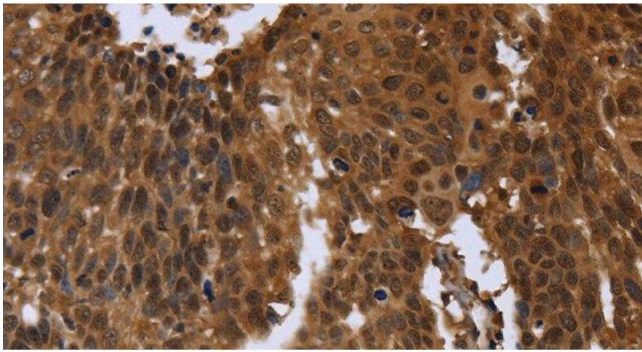
Molecular Weight:	55 kDa
NCBI Accession:	NP_068742
UniProt:	Q8N441
Pathways:	RTK Signaling

Application Details

Application Notes:	WB 1:200-1:1000, IHC 1:100-1:300
Restrictions:	For Research Use only

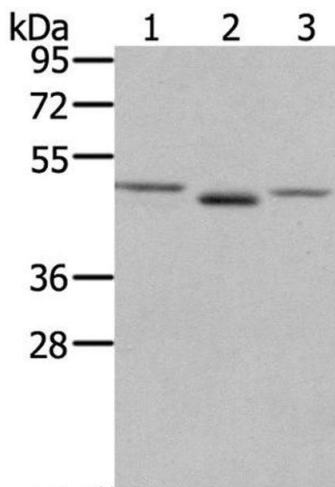
Handling

Format:	Liquid
Concentration:	0.6 mg/mL
Buffer:	PBS with 0.05 % sodium azide and 50 % glycerol, PH7.4
Preservative:	Sodium azide
Precaution of Use:	This product contains Sodium azide: a POISONOUS AND HAZARDOUS SUBSTANCE which should be handled by trained staff only.
Storage:	-20 °C
Storage Comment:	Store at -20°C. Avoid freeze / thaw cycles.



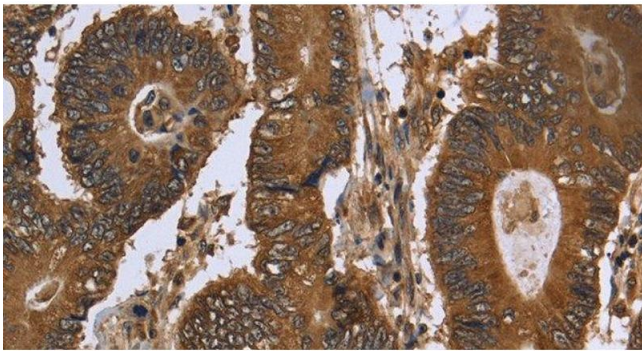
Immunohistochemistry (Paraffin-embedded Sections)

Image 1. Immunohistochemistry of paraffin-embedded Human cervical cancer using FGFR1 Polyclonal Antibody at dilution of 1:40



Western Blotting

Image 2. Western Blot analysis of NIH/3T3 cell and Human placenta tissue, lovo cell using FGFR1 Polyclonal Antibody at dilution of 1:400



Immunohistochemistry (Paraffin-embedded Sections)

Image 3. Immunohistochemistry of paraffin-embedded Human colon cancer using FGFR1 Polyclonal Antibody at dilution of 1:40