

Datasheet for ABIN7237008

**anti-FHL1 antibody**[Go to Product page](#)**1** Image

## Overview

Quantity:	200 µL
Target:	FHL1
Reactivity:	Human, Mouse, Rat
Host:	Rabbit
Clonality:	Polyclonal
Conjugate:	This FHL1 antibody is un-conjugated
Application:	Western Blotting (WB), ELISA

## Product Details

Immunogen:	Recombinant protein of human FHL1
Isotype:	IgG
Characteristics:	Polyclonal Antibody
Purification:	Affinity purification

## Target Details

Target:	FHL1
Alternative Name:	FHL1 ( <a href="#">FHL1 Products</a> )
Background:	This gene encodes a member of the four-and-a-half-LIM-only protein family. Family members contain two highly conserved, tandemly arranged, zinc finger domains with four highly conserved cysteines binding a zinc atom in each zinc finger. Expression of these family members occurs in a cell- and tissue-specific mode and these proteins are involved in many

## Target Details

cellular processes. Mutations in this gene have been found in patients with Emery-Dreifuss muscular dystrophy. Multiple alternately spliced transcript variants which encode different protein isoforms have been described.

Molecular Weight: 36 kDa

UniProt: [Q13642](#)

## Application Details

Application Notes: WB 1:500-1:2000

Restrictions: For Research Use only

## Handling

Format: Liquid

Concentration: 0.5 mg/mL

Buffer: PBS with 0.05 % sodium azide and 50 % glycerol, PH7.4

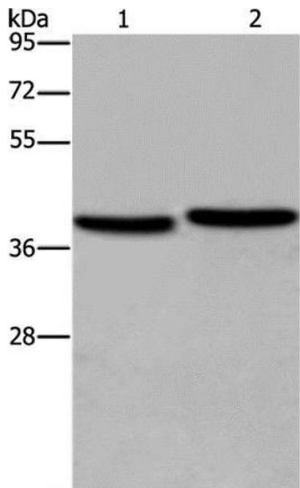
Preservative: Sodium azide

Precaution of Use: This product contains Sodium azide: a POISONOUS AND HAZARDOUS SUBSTANCE which should be handled by trained staff only.

Storage: -20 °C

Storage Comment: Store at -20°C. Avoid freeze / thaw cycles.

## Images



### Western Blotting

**Image 1.** Western Blot analysis of MCF-7 and NIH/3T3 cell using FHL1 Polyclonal Antibody at dilution of 1:400