

Datasheet for ABIN7237049

**anti-GABPB2 antibody**

3 Images

[Go to Product page](#)

## Overview

Quantity:	200 µL
Target:	GABPB2
Reactivity:	Human, Mouse
Host:	Rabbit
Clonality:	Polyclonal
Conjugate:	This GABPB2 antibody is un-conjugated
Application:	Western Blotting (WB), ELISA, Immunohistochemistry (IHC)

## Product Details

Immunogen:	Recombinant protein of human GABPB2
Isotype:	IgG
Characteristics:	Polyclonal Antibody
Purification:	Affinity purification

## Target Details

Target:	GABPB2
Alternative Name:	GABPB2 ( <a href="#">GABPB2 Products</a> )
Background:	The GABPB gene encodes at least 4 beta subunit isoforms that were originally thought to be encoded by 2 separate genes, GABPB1 and GABPB2. The gene on Hsa1q was named GABPB2 and the gene on Hsa15q was named GABPB1. The predicted GABPB1 and GABPB2 subunits contain 383 and 347 amino acids, respectively, and are highly homologous.

## Target Details

Molecular Weight:	49 kDa
UniProt:	<a href="#">Q8TAK5</a>

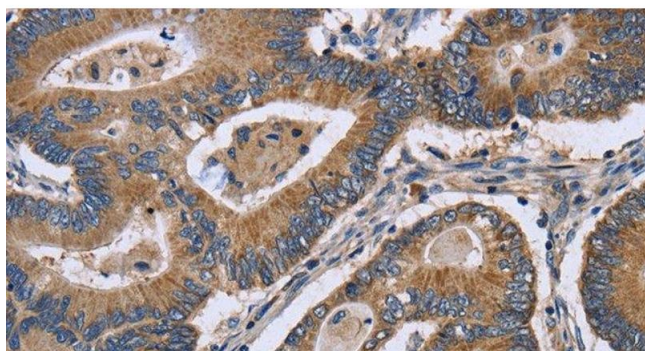
## Application Details

Application Notes:	WB 1:500-1:2000, IHC 1:50-1:200
Restrictions:	For Research Use only

## Handling

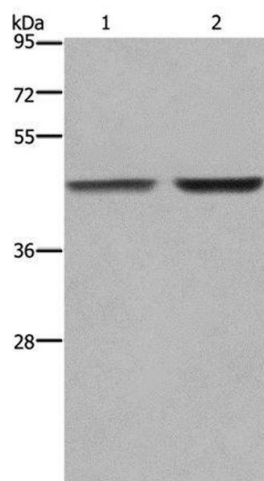
Format:	Liquid
Concentration:	0.5 mg/mL
Buffer:	PBS with 0.05 % sodium azide and 50 % glycerol, PH7.4
Preservative:	Sodium azide
Precaution of Use:	This product contains Sodium azide: a POISONOUS AND HAZARDOUS SUBSTANCE which should be handled by trained staff only.
Storage:	-20 °C
Storage Comment:	Store at -20°C. Avoid freeze / thaw cycles.

## Images



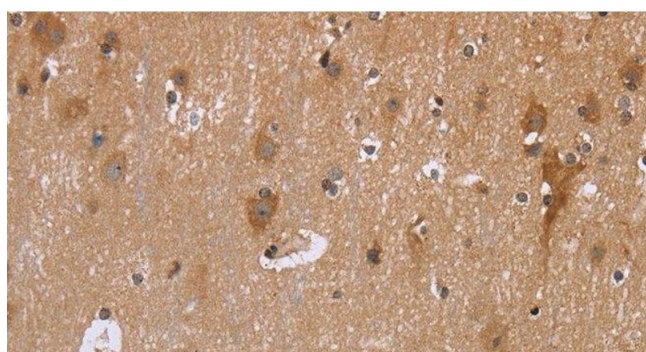
### Immunohistochemistry (Paraffin-embedded Sections)

**Image 1.** Immunohistochemistry of paraffin-embedded Human colon cancer using GABPB2 Polyclonal Antibody at dilution of 1:30



### Western Blotting

**Image 2.** Western Blot analysis of MCF-7 and 231 cell using GABPB2 Polyclonal Antibody at dilution of 1:550



### Immunohistochemistry (Paraffin-embedded Sections)

**Image 3.** Immunohistochemistry of paraffin-embedded Human brain using GABPB2 Polyclonal Antibody at dilution of 1:30