

Datasheet for ABIN7237073

anti-GCK antibody

3 Images

[Go to Product page](#)

Overview

Quantity:	200 µL
Target:	GCK
Reactivity:	Human, Mouse, Rat
Host:	Rabbit
Clonality:	Polyclonal
Application:	Western Blotting (WB), ELISA, Immunohistochemistry (IHC)

Product Details

Immunogen:	Recombinant protein of human GCK
Isotype:	IgG
Characteristics:	Polyclonal Antibody
Purification:	Affinity purification

Target Details

Target:	GCK
Alternative Name:	GCK (GCK Products)
Background:	Hexokinases phosphorylate glucose to produce glucose-6-phosphate, the first step in most glucose metabolism pathways. Alternative splicing of this gene results in three tissue-specific forms of glucokinase, one found in pancreatic islet beta cells and two found in liver. The protein localizes to the outer membrane of mitochondria. In contrast to other forms of hexokinase, this enzyme is not inhibited by its product glucose-6-phosphate but remains active while glucose is

Target Details

abundant. Mutations in this gene have been associated with non-insulin dependent diabetes mellitus (NIDDM), maturity onset diabetes of the young, type 2 (MODY2) and persistent hyperinsulinemic hypoglycemia of infancy (PHHI).

Molecular Weight: 52 kDa

UniProt: [P35557](#)

Pathways: [MAPK Signaling](#), [Positive Regulation of Peptide Hormone Secretion](#), [Carbohydrate Homeostasis](#), [Cellular Glucan Metabolic Process](#), [Regulation of Carbohydrate Metabolic Process](#)

Application Details

Application Notes: WB 1:500-1:2000, IHC 1:50-1:200

Restrictions: For Research Use only

Handling

Format: Liquid

Concentration: 0.3 mg/mL

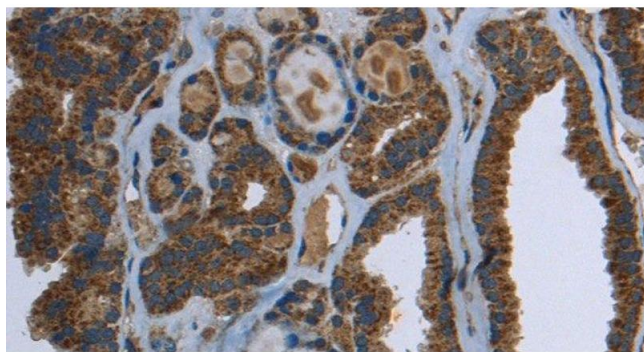
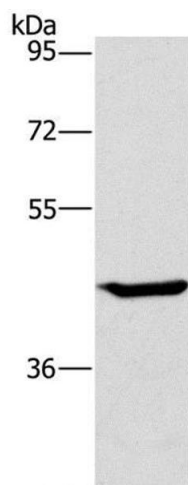
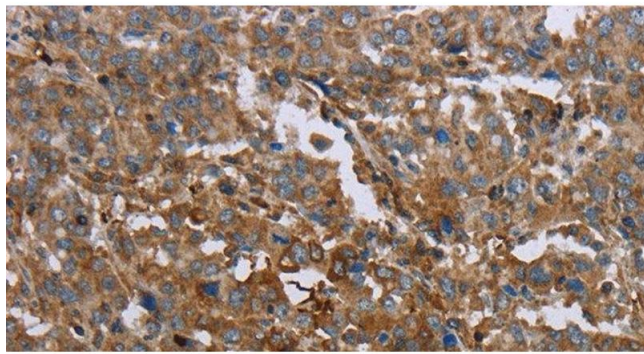
Buffer: PBS with 0.05 % sodium azide and 50 % glycerol, PH7.4

Preservative: Sodium azide

Precaution of Use: This product contains Sodium azide: a POISONOUS AND HAZARDOUS SUBSTANCE which should be handled by trained staff only.

Storage: -20 °C

Storage Comment: Store at -20°C. Avoid freeze / thaw cycles.



Immunohistochemistry (Paraffin-embedded Sections)

Image 1. Immunohistochemistry of paraffin-embedded Human liver cancer using GCK Polyclonal Antibody at dilution of 1:40

Western Blotting

Image 2. Western Blot analysis of HT-29 cell using GCK Polyclonal Antibody at dilution of 1:450

Immunohistochemistry (Paraffin-embedded Sections)

Image 3. Immunohistochemistry of paraffin-embedded Human thyroid cancer using GCK Polyclonal Antibody at dilution of 1:40