

Datasheet for ABIN7237085

anti-GGT1 antibody

3 Images

[Go to Product page](#)

Overview

Quantity:	200 µL
Target:	GGT1
Reactivity:	Human, Rat
Host:	Rabbit
Clonality:	Polyclonal
Application:	Western Blotting (WB), ELISA, Immunohistochemistry (IHC)

Product Details

Immunogen:	Recombinant protein of human GGT1
Isotype:	IgG
Characteristics:	Polyclonal Antibody
Purification:	Affinity purification

Target Details

Target:	GGT1
Alternative Name:	GGT1 (GGT1 Products)
Background:	The enzyme encoded by this gene is a type I gamma-glutamyltransferase that catalyzes the transfer of the glutamyl moiety of glutathione to a variety of amino acids and dipeptide acceptors. The enzyme is composed of a heavy chain and a light chain, which are derived from a single precursor protein. It is expressed in tissues involved in absorption and secretion and may contribute to the etiology of diabetes and other metabolic disorders. Multiple alternatively

Target Details

spliced variants have been identified. There are a number of related genes present on chromosomes 20 and 22, and putative pseudogenes for this gene on chromosomes 2, 13, and 22.

Molecular Weight: 61 kDa

NCBI Accession: [NP_038347](#)

UniProt: [P19440](#)

Application Details

Application Notes: WB 1:500-1:2000, IHC 1:50-1:200

Restrictions: For Research Use only

Handling

Format: Liquid

Concentration: 0.4 mg/mL

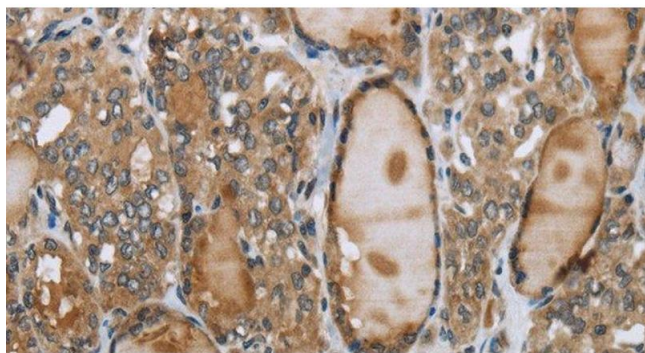
Buffer: PBS with 0.05 % sodium azide and 50 % glycerol, PH7.4

Preservative: Sodium azide

Precaution of Use: This product contains Sodium azide: a POISONOUS AND HAZARDOUS SUBSTANCE which should be handled by trained staff only.

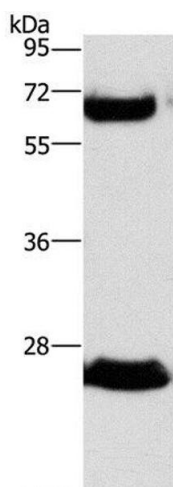
Storage: -20 °C

Storage Comment: Store at -20°C. Avoid freeze / thaw cycles.



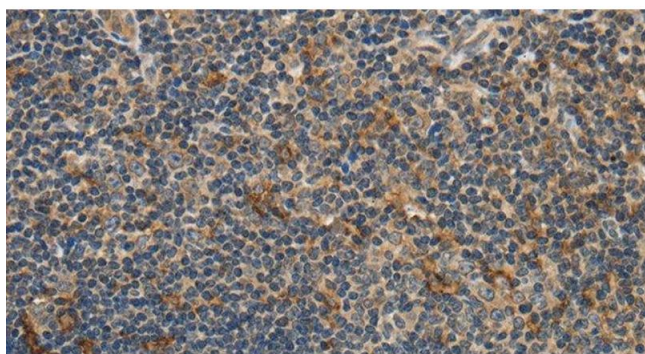
Immunohistochemistry (Paraffin-embedded Sections)

Image 1. Immunohistochemistry of paraffin-embedded Human thyroid cancer using GGT1 Polyclonal Antibody at dilution of 1:40



Western Blotting

Image 2. Western Blot analysis of Human fetal liver tissue using GGT1 Polyclonal Antibody at dilution of 1:300



Immunohistochemistry (Paraffin-embedded Sections)

Image 3. Immunohistochemistry of paraffin-embedded Human tonsil using GGT1 Polyclonal Antibody at dilution of 1:40