

Datasheet for ABIN7237089

**anti-Growth Hormone 2 antibody**[Go to Product page](#)**3** Images

## Overview

Quantity:	200 µL
Target:	Growth Hormone 2 (GH2)
Reactivity:	Human
Host:	Rabbit
Clonality:	Polyclonal
Application:	Western Blotting (WB), ELISA, Immunohistochemistry (IHC)

## Product Details

Immunogen:	Recombinant protein of human GH2
Isotype:	IgG
Characteristics:	Polyclonal Antibody
Purification:	Affinity purification

## Target Details

Target:	Growth Hormone 2 (GH2)
Alternative Name:	GH2 ( <a href="#">GH2 Products</a> )
Background:	The protein encoded by this gene is a member of the somatotropin/prolactin family of hormones which play an important role in growth control. The gene, along with four other related genes, is located at the growth hormone locus on chromosome 17 where they are interspersed in the same transcriptional orientation, an arrangement which is thought to have evolved by a series of gene duplications. The five genes share a remarkably high degree of

## Target Details

sequence identity. Alternative splicing generates additional isoforms of each of the five growth hormones, leading to further diversity and potential for specialization.

Molecular Weight: 25 kDa

UniProt: [P01242](#)

Pathways: [NF-kappaB Signaling](#), [JAK-STAT Signaling](#), [Response to Growth Hormone Stimulus](#)

## Application Details

Application Notes: WB 1:500-1:2000, IHC 1:50-1:200

Restrictions: For Research Use only

## Handling

Format: Liquid

Concentration: 0.3 mg/mL

Buffer: PBS with 0.05 % sodium azide and 50 % glycerol, PH7.4

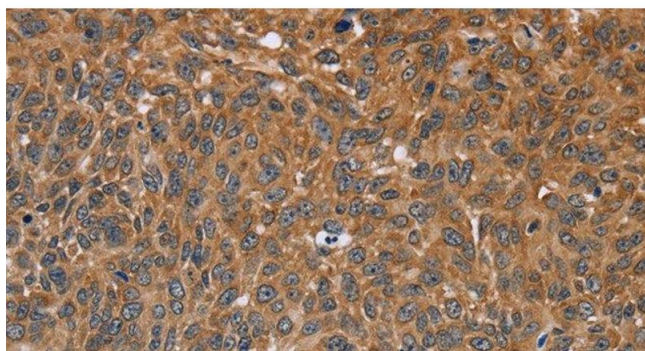
Preservative: Sodium azide

Precaution of Use: This product contains Sodium azide: a POISONOUS AND HAZARDOUS SUBSTANCE which should be handled by trained staff only.

Storage: -20 °C

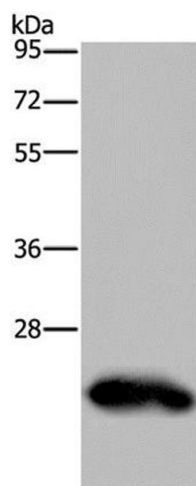
Storage Comment: Store at -20°C. Avoid freeze / thaw cycles.

## Images



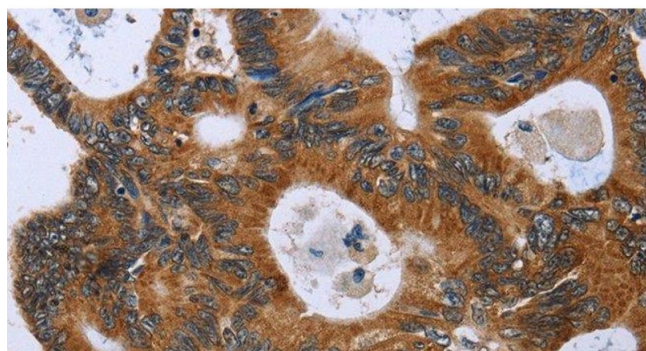
### Immunohistochemistry (Paraffin-embedded Sections)

**Image 1.** Immunohistochemistry of paraffin-embedded Human lung cancer using GH2 Polyclonal Antibody at dilution of 1:40



#### Western Blotting

**Image 2.** Western Blot analysis of Human placenta tissue using GH2 Polyclonal Antibody at dilution of 1:500



#### Immunohistochemistry (Paraffin-embedded Sections)

**Image 3.** Immunohistochemistry of paraffin-embedded Human colon cancer using GH2 Polyclonal Antibody at dilution of 1:40