

Datasheet for ABIN7237121  
**anti-Golgin A2 (GOLGA2) antibody**

## 3 Images

[Go to Product page](#)

## Overview

Quantity:	200 µL
Target:	Golgin A2 (GOLGA2)
Reactivity:	Human
Host:	Rabbit
Clonality:	Polyclonal
Conjugate:	Un-conjugated
Application:	Western Blotting (WB), Immunohistochemistry (IHC), ELISA

## Product Details

Immunogen:	Recombinant protein of human GOLGA2
Isotype:	IgG
Characteristics:	Polyclonal Antibody
Purification:	Affinity purification

## Target Details

Target:	Golgin A2 (GOLGA2)
Alternative Name:	GOLGA2 ( <a href="#">GOLGA2 Products</a> )
Background:	<p>The Golgi apparatus, which participates in glycosylation and transport of proteins and lipids in the secretory pathway, consists of a series of stacked cisternae (flattened membrane sacs).</p> <p>Interactions between the Golgi and microtubules are thought to be important for the reorganization of the Golgi after it fragments during mitosis. This gene encodes one of the</p>

## Target Details

golgins, a family of proteins localized to the Golgi. This encoded protein has been postulated to play roles in the stacking of Golgi cisternae and in vesicular transport. Several alternatively spliced transcript variants of this gene have been described, but the full-length nature of these variants has not been determined.

Molecular Weight: 113 kDa

UniProt: [Q08379](#)

Pathways: [SARS-CoV-2 Protein Interactome](#)

## Application Details

Application Notes: WB 1:500-1:2000, IHC 1:100-1:300

Restrictions: For Research Use only

## Handling

Format: Liquid

Concentration: 0.8 mg/mL

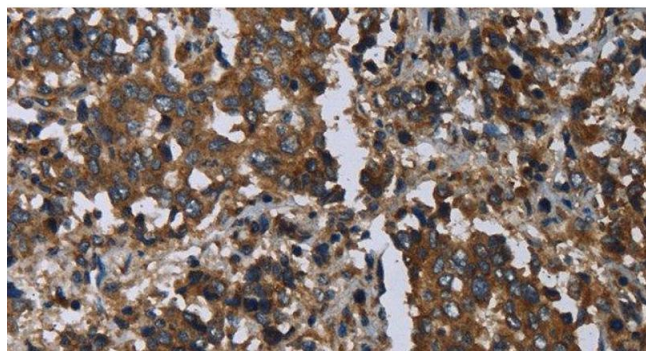
Buffer: PBS with 0.05 % sodium azide and 50 % glycerol, PH7.4

Preservative: Sodium azide

Precaution of Use: This product contains Sodium azide: a POISONOUS AND HAZARDOUS SUBSTANCE which should be handled by trained staff only.

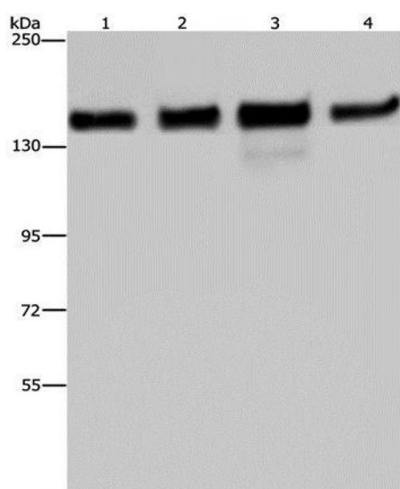
Storage: -20 °C

Storage Comment: Store at -20°C. Avoid freeze / thaw cycles.



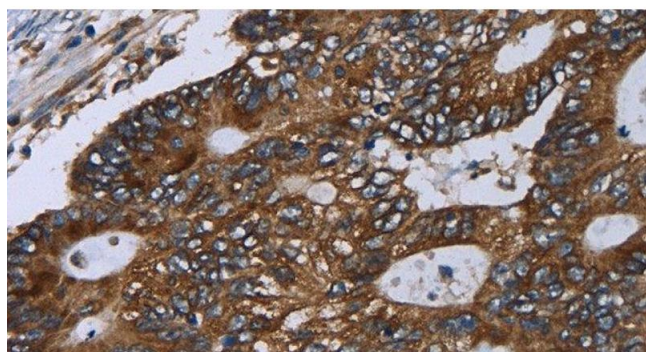
#### Immunohistochemistry (Paraffin-embedded Sections)

**Image 1.** Immunohistochemistry of paraffin-embedded Human liver cancer using GOLGA2 Polyclonal Antibody at dilution of 1:60



#### Western Blotting

**Image 2.** Western Blot analysis of 293T, HeLa, A172 and A549 cell using GOLGA2 Polyclonal Antibody at dilution of 1:600



#### Immunohistochemistry (Paraffin-embedded Sections)

**Image 3.** Immunohistochemistry of paraffin-embedded Human colon cancer using GOLGA2 Polyclonal Antibody at dilution of 1:60