

Datasheet for ABIN7237134

anti-CD42b antibody**3** Images[Go to Product page](#)

Overview

Quantity:	200 µL
Target:	CD42b (GP1BA)
Reactivity:	Human, Mouse
Host:	Rabbit
Clonality:	Polyclonal
Conjugate:	This CD42b antibody is un-conjugated
Application:	Western Blotting (WB), Immunohistochemistry (IHC), ELISA

Product Details

Immunogen:	Recombinant protein of human GP1BA
Isotype:	IgG
Characteristics:	Polyclonal Antibody
Purification:	Affinity purification

Target Details

Target:	CD42b (GP1BA)
Alternative Name:	CD42b (GP1BA Products)
Background:	Glycoprotein Ib (GP Ib) is a platelet surface membrane glycoprotein composed of a heterodimer, an alpha chain and a beta chain, that is linked by disulfide bonds. The Gp Ib functions as a receptor for von Willebrand factor (VWF). The complete receptor complex includes noncovalent association of the alpha and beta subunits with platelet glycoprotein IX

Target Details

and platelet glycoprotein V. The binding of the GP Ib-IX-V complex to VWF facilitates initial platelet adhesion to vascular subendothelium after vascular injury, and also initiates signaling events within the platelet that lead to enhanced platelet activation, thrombosis, and hemostasis. This gene encodes the alpha subunit. Mutations in this gene result in Bernard-Soulier syndromes and platelet-type von Willebrand disease. The coding region of this gene is known to contain a polymorphic variable number tandem repeat (VNTR) domain that is associated with susceptibility to nonarteritic anterior ischemic optic neuropathy.

Molecular Weight:	72 kDa
-------------------	--------

UniProt:	P07359
----------	------------------------

Application Details

Application Notes:	WB 1:500-1:2000, IHC 1:100-1:300
--------------------	----------------------------------

Restrictions:	For Research Use only
---------------	-----------------------

Handling

Format:	Liquid
---------	--------

Concentration:	0.8 mg/mL
----------------	-----------

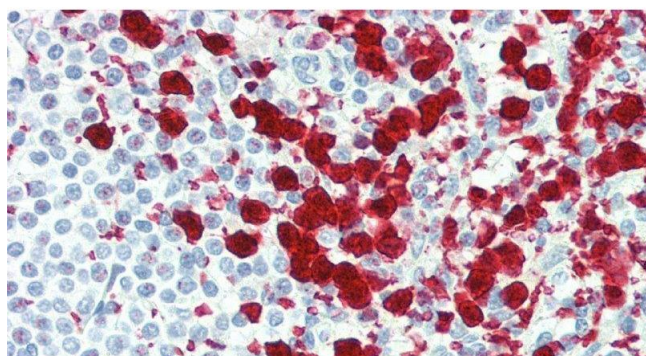
Buffer:	PBS with 0.05 % sodium azide and 50 % glycerol, PH7.4
---------	---

Preservative:	Sodium azide
---------------	--------------

Precaution of Use:	This product contains Sodium azide: a POISONOUS AND HAZARDOUS SUBSTANCE which should be handled by trained staff only.
--------------------	--

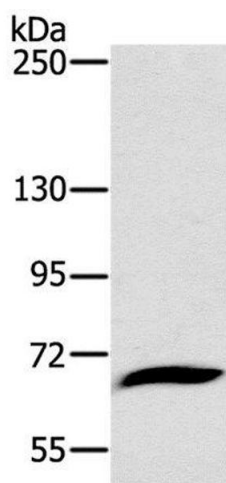
Storage:	-20 °C
----------	--------

Storage Comment:	Store at -20°C. Avoid freeze / thaw cycles.
------------------	---



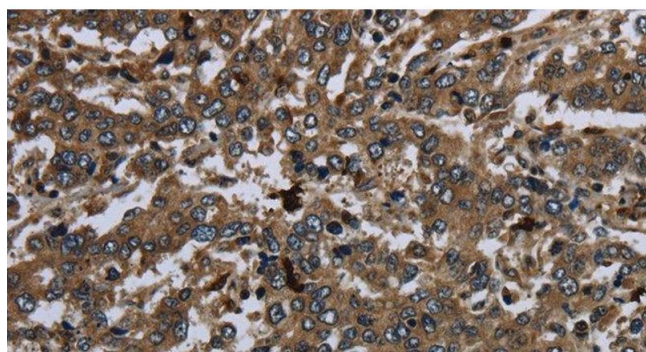
Immunohistochemistry (Paraffin-embedded Sections)

Image 1. Immunohistochemistry of paraffin-embedded Spleen tissue using CD42b Polyclonal Antibody at dilution of 1:80.



Western Blotting

Image 2. Western Blot analysis of Mouse liver tissue using CD42b Polyclonal Antibody at dilution of 1:800



Immunohistochemistry (Paraffin-embedded Sections)

Image 3. Immunohistochemistry of paraffin-embedded Human liver cancer using CD42b Polyclonal Antibody at dilution of 1:60