

Datasheet for ABIN7237186

anti-CSH1 antibody

3 Images

[Go to Product page](#)

Overview

Quantity:	200 µL
Target:	CSH1
Reactivity:	Human
Host:	Rabbit
Clonality:	Polyclonal
Conjugate:	This CSH1 antibody is un-conjugated
Application:	Western Blotting (WB), ELISA, Immunohistochemistry (IHC)

Product Details

Immunogen:	Recombinant protein of human CSH1
Isotype:	IgG
Characteristics:	Polyclonal Antibody
Purification:	Affinity purification

Target Details

Target:	CSH1
Alternative Name:	CSH1 (CSH1 Products)
Background:	The protein encoded by this gene is a member of the somatotropin/prolactin family of hormones and plays an important role in growth control. The gene is located at the growth hormone locus on chromosome 17 along with four other related genes in the same transcriptional orientation, an arrangement which is thought to have evolved by a series of gene

Target Details

duplications. Although the five genes share a remarkably high degree of sequence identity, they are expressed selectively in different tissues. Alternative splicing generates additional isoforms of each of the five growth hormones, leading to further diversity and potential for specialization.

Molecular Weight: 25 kDa

UniProt: [P0DML2](#)

Pathways: [Response to Growth Hormone Stimulus](#)

Application Details

Application Notes: WB 1:500-1:2000, IHC 1:50-1:200

Restrictions: For Research Use only

Handling

Format: Liquid

Concentration: 0.4 mg/mL

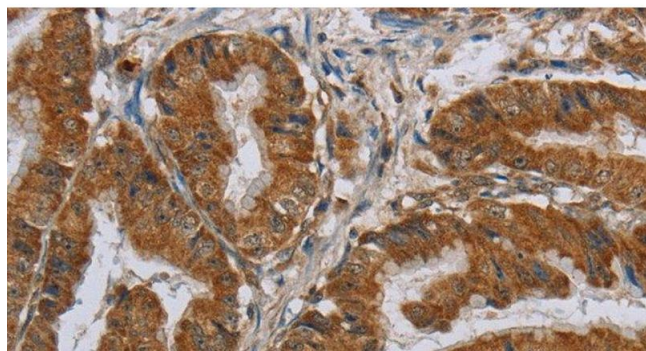
Buffer: PBS with 0.05 % sodium azide and 50 % glycerol, PH7.4

Preservative: Sodium azide

Precaution of Use: This product contains Sodium azide: a POISONOUS AND HAZARDOUS SUBSTANCE which should be handled by trained staff only.

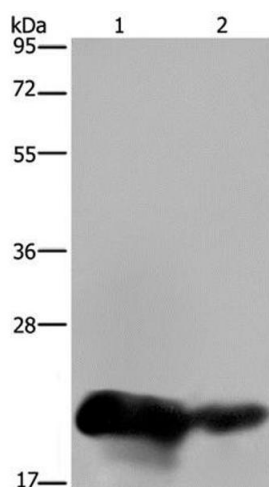
Storage: -20 °C

Storage Comment: Store at -20°C. Avoid freeze / thaw cycles.



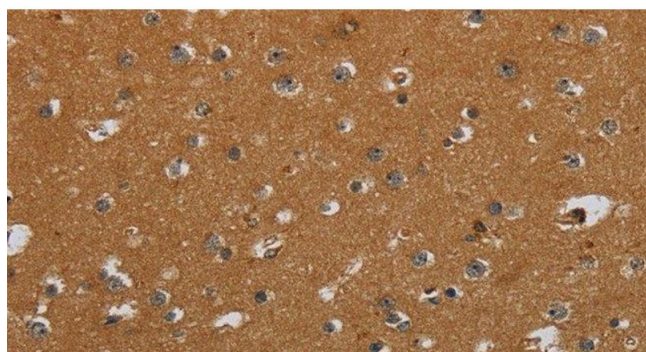
Immunohistochemistry (Paraffin-embedded Sections)

Image 1. Immunohistochemistry of paraffin-embedded Human esophagus cancer using CSH1 Polyclonal Antibody at dilution of 1:40



Western Blotting

Image 2. Western Blot analysis of Human placenta and breast infiltrative duct tissue using CSH1 Polyclonal Antibody at dilution of 1:200



Immunohistochemistry (Paraffin-embedded Sections)

Image 3. Immunohistochemistry of paraffin-embedded Human brain using CSH1 Polyclonal Antibody at dilution of 1:40