

Datasheet for ABIN7237190

anti-HSD17B8 antibody

4 Images

[Go to Product page](#)

Overview

Quantity:	200 µL
Target:	HSD17B8
Reactivity:	Human, Mouse, Rat
Host:	Rabbit
Clonality:	Polyclonal
Conjugate:	This HSD17B8 antibody is un-conjugated
Application:	Western Blotting (WB), Immunohistochemistry (IHC), ELISA

Product Details

Immunogen:	Recombinant protein of human HSD17B8
Isotype:	IgG
Characteristics:	Polyclonal Antibody
Purification:	Affinity purification

Target Details

Target:	HSD17B8
Alternative Name:	HSD17B8 (HSD17B8 Products)
Background:	In mice, the Ke6 protein is a 17-beta-hydroxysteroid dehydrogenase that can regulate the concentration of biologically active estrogens and androgens. It is preferentially an oxidative enzyme and inactivates estradiol, testosterone, and dihydrotestosterone. However, the enzyme has some reductive activity and can synthesize estradiol from estrone. The protein encoded by

Target Details

this gene is similar to Ke6 and is a member of the short-chain dehydrogenase superfamily. An alternatively spliced transcript of this gene has been detected, but the full-length nature of this variant has not been determined.

Molecular Weight: 27 kDa

UniProt: [Q92506](#)

Pathways: [Steroid Hormone Biosynthesis](#)

Application Details

Application Notes: WB 1:500-1:2000, IHC 1:50-1:200

Restrictions: For Research Use only

Handling

Format: Liquid

Concentration: 0.3 mg/mL

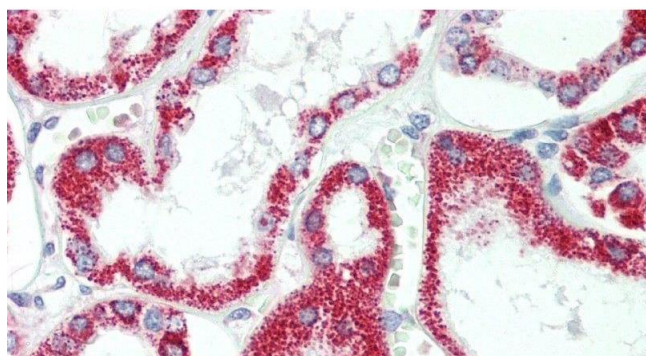
Buffer: PBS with 0.05 % sodium azide and 50 % glycerol, PH7.4

Preservative: Sodium azide

Precaution of Use: This product contains Sodium azide: a POISONOUS AND HAZARDOUS SUBSTANCE which should be handled by trained staff only.

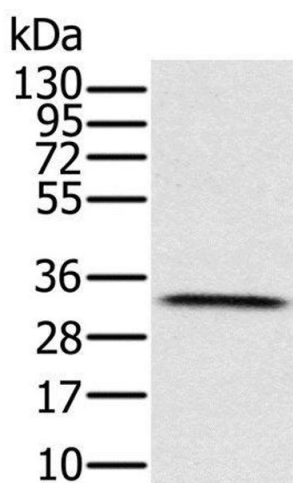
Storage: -20 °C

Storage Comment: Store at -20°C. Avoid freeze / thaw cycles.



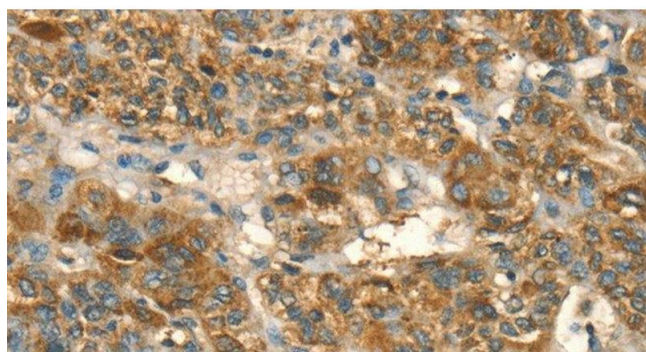
Immunohistochemistry (Paraffin-embedded Sections)

Image 1. Immunohistochemistry of paraffin-embedded Human Kidney using HSD17B8 Polyclonal Antibody at dilution of 1:100.



Western Blotting

Image 2. Western Blot analysis of Human testis tissue using HSD17B8 Polyclonal Antibody at dilution of 1:650



Immunohistochemistry (Paraffin-embedded Sections)

Image 3. Immunohistochemistry of paraffin-embedded Human liver cancer using HSD17B8 Polyclonal Antibody at dilution of 1:55

Please check the [product details page](#) for more images. Overall 4 images are available for ABIN7237190.