



Datasheet for ABIN7237254 anti-IMPDH2 antibody



[Go to Product page](#)

3 Images

Overview

Quantity:	200 µL
Target:	IMPDH2
Reactivity:	Human, Mouse, Rat
Host:	Rabbit
Clonality:	Polyclonal
Conjugate:	This IMPDH2 antibody is un-conjugated
Application:	Western Blotting (WB), ELISA, Immunohistochemistry (IHC)

Product Details

Immunogen:	Recombinant protein of human IMPDH2
Isotype:	IgG
Characteristics:	Polyclonal Antibody
Purification:	Affinity purification

Target Details

Target:	IMPDH2
Alternative Name:	IMPDH2 (IMPDH2 Products)
Background:	This gene encodes the rate-limiting enzyme in the de novo guanine nucleotide biosynthesis. It is thus involved in maintaining cellular guanine deoxy- and ribonucleotide pools needed for DNA and RNA synthesis. The encoded protein catalyzes the NAD-dependent oxidation of inosine-5'-monophosphate into xanthine-5'-monophosphate, which is then converted into guanosine-5'-

Target Details

monophosphate. This gene is up-regulated in some neoplasms, suggesting it may play a role in malignant transformation.

Molecular Weight: 56 kDa

UniProt: [P12268](#)

Pathways: [Ribonucleoside Biosynthetic Process](#), [SARS-CoV-2 Protein Interactome](#)

Application Details

Application Notes: WB 1:500-1:2000, IHC 1:50-1:200

Restrictions: For Research Use only

Handling

Format: Liquid

Concentration: 0.5 mg/mL

Buffer: PBS with 0.05 % sodium azide and 50 % glycerol, PH7.4

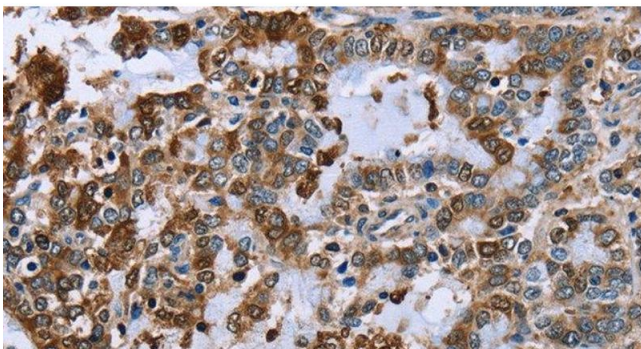
Preservative: Sodium azide

Precaution of Use: This product contains Sodium azide: a POISONOUS AND HAZARDOUS SUBSTANCE which should be handled by trained staff only.

Storage: -20 °C

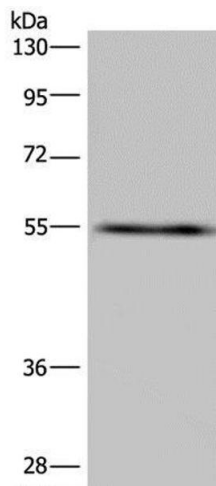
Storage Comment: Store at -20°C. Avoid freeze / thaw cycles.

Images



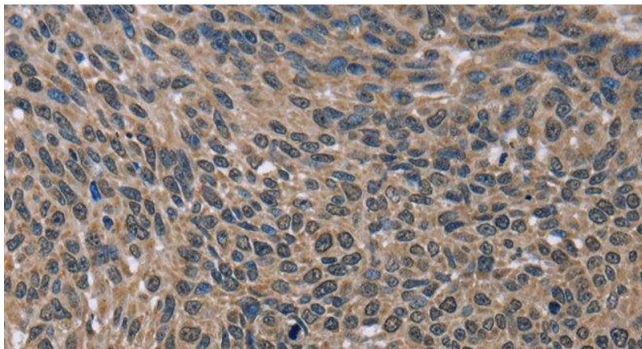
Immunohistochemistry (Paraffin-embedded Sections)

Image 1. Immunohistochemistry of paraffin-embedded Human liver cancer using IMPDH2 Polyclonal Antibody at dilution of 1:60



Western Blotting

Image 2. Western Blot analysis of A549 cell using IMPDH2 Polyclonal Antibody at dilution of 1:650



Immunohistochemistry (Paraffin-embedded Sections)

Image 3. Immunohistochemistry of paraffin-embedded Human lung cancer using IMPDH2 Polyclonal Antibody at dilution of 1:60