

Datasheet for ABIN7237262

anti-CD103 antibody**3** Images[Go to Product page](#)

Overview

Quantity:	200 µL
Target:	CD103 (ITGAE)
Reactivity:	Human
Host:	Rabbit
Clonality:	Polyclonal
Conjugate:	This CD103 antibody is un-conjugated
Application:	Immunohistochemistry (IHC), Western Blotting (WB), ELISA

Product Details

Immunogen:	Recombinant protein of human ITGAE
Isotype:	IgG
Characteristics:	Polyclonal Antibody
Purification:	Affinity purification

Target Details

Target:	CD103 (ITGAE)
Alternative Name:	ITGAE (ITGAE Products)
Background:	Integrins are heterodimeric integral membrane proteins composed of an alpha chain and a beta chain. This gene encodes an I-domain-containing alpha integrin that undergoes post-translational cleavage in the extracellular domain, yielding disulfide-linked heavy and light chains. In combination with the beta 7 integrin, this protein forms the E-cadherin binding

Target Details

integrin known as the human mucosal lymphocyte-1 antigen. This protein is preferentially expressed in human intestinal intraepithelial lymphocytes (IEL), and in addition to a role in adhesion, it may serve as an accessory molecule for IEL activation.

Molecular Weight: 130 kDa

UniProt: [P38570](#)

Application Details

Application Notes: WB 1:200-1:1000, IHC 1:50-1:200

Restrictions: For Research Use only

Handling

Format: Liquid

Concentration: 0.4 mg/mL

Buffer: PBS with 0.05 % sodium azide and 50 % glycerol, PH7.4

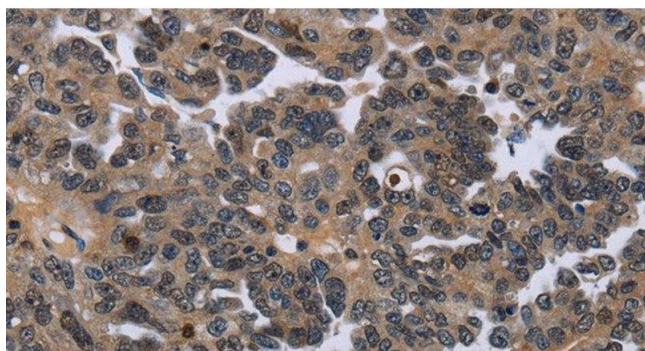
Preservative: Sodium azide

Precaution of Use: This product contains Sodium azide: a POISONOUS AND HAZARDOUS SUBSTANCE which should be handled by trained staff only.

Storage: -20 °C

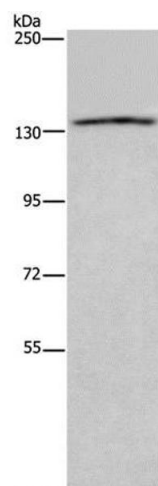
Storage Comment: Store at -20°C. Avoid freeze / thaw cycles.

Images



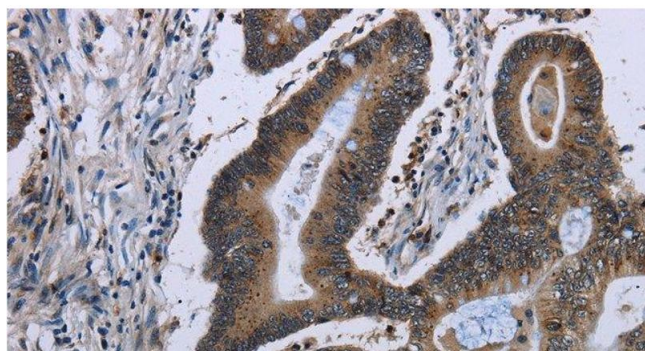
Immunohistochemistry (Paraffin-embedded Sections)

Image 1. Immunohistochemistry of paraffin-embedded Human ovarian cancer using ITGAE Polyclonal Antibody at dilution of 1:50



Western Blotting

Image 2. Western Blot analysis of LoVo cells using ITGAE Polyclonal Antibody at dilution of 1:550



Immunohistochemistry (Paraffin-embedded Sections)

Image 3. Immunohistochemistry of paraffin-embedded Human ovarian cancer tissue using ITGAE Polyclonal Antibody at dilution of 1:50