



Datasheet for ABIN7237270

anti-F11R antibody



[Go to Product page](#)

3 Images

Overview

Quantity:	200 µL
Target:	F11R
Reactivity:	Human
Host:	Rabbit
Clonality:	Polyclonal
Conjugate:	This F11R antibody is un-conjugated
Application:	Western Blotting (WB), ELISA, Immunohistochemistry (IHC)

Product Details

Immunogen:	Recombinant protein of human F11R
Isotype:	IgG
Characteristics:	Polyclonal Antibody
Purification:	Affinity purification

Target Details

Target:	F11R
Alternative Name:	JAM-A (F11R Products)
Background:	Tight junctions represent one mode of cell-to-cell adhesion in epithelial or endothelial cell sheets, forming continuous seals around cells and serving as a physical barrier to prevent solutes and water from passing freely through the paracellular space. The protein encoded by this immunoglobulin superfamily gene member is an important regulator of tight junction

Target Details

assembly in epithelia. In addition, the encoded protein can act as a receptor for reovirus, a ligand for the integrin LFA1, involved in leukocyte transmigration, and a platelet receptor. Multiple 5' alternatively spliced variants, encoding the same protein, have been identified but their biological validity has not been established.

Molecular Weight: 33 kDa

UniProt: [Q9Y624](#)

Pathways: [Cell-Cell Junction Organization](#)

Application Details

Application Notes: WB 1:500-1:2000, IHC 1:50-1:200

Restrictions: For Research Use only

Handling

Format: Liquid

Concentration: 0.2 mg/mL

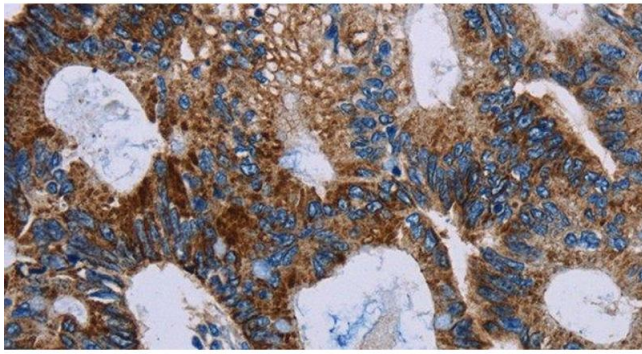
Buffer: PBS with 0.05 % sodium azide and 50 % glycerol, PH7.4

Preservative: Sodium azide

Precaution of Use: This product contains Sodium azide: a POISONOUS AND HAZARDOUS SUBSTANCE which should be handled by trained staff only.

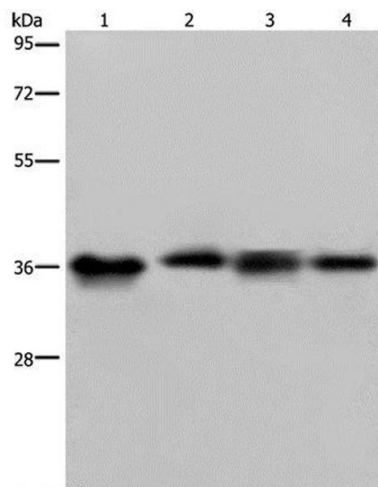
Storage: -20 °C

Storage Comment: Store at -20°C. Avoid freeze / thaw cycles.



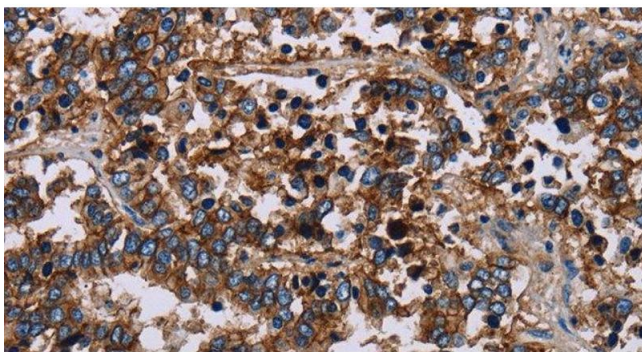
Immunohistochemistry (Paraffin-embedded Sections)

Image 1. Immunohistochemistry of paraffin-embedded Human colon cancer using JAM-A Polyclonal Antibody at dilution of 1:40



Western Blotting

Image 2. Western Blot analysis of HepG2 and 293T cell, Human kidney cancer tissue and K562 cell using JAM-A Polyclonal Antibody at dilution of 1:500



Immunohistochemistry (Paraffin-embedded Sections)

Image 3. Immunohistochemistry of paraffin-embedded Human liver cancer using JAM-A Polyclonal Antibody at dilution of 1:40