



[Go to Product page](#)

Datasheet for ABIN7237375

anti-PABP antibody

1 Image

Overview

Quantity:	200 µL
Target:	PABP (PABPC1)
Reactivity:	Human, Mouse, Rat
Host:	Rabbit
Clonality:	Polyclonal
Conjugate:	This PABP antibody is un-conjugated
Application:	Western Blotting (WB), ELISA

Product Details

Immunogen:	Recombinant protein of human PABPC1
Isotype:	IgG
Characteristics:	Polyclonal Antibody
Purification:	Affinity purification

Target Details

Target:	PABP (PABPC1)
Alternative Name:	PABPC1 (PABPC1 Products)
Background:	This gene encodes a poly(A) binding protein. The protein shuttles between the nucleus and cytoplasm and binds to the 3' poly(A) tail of eukaryotic messenger RNAs via RNA-recognition motifs. The binding of this protein to poly(A) promotes ribosome recruitment and translation initiation, it is also required for poly(A) shortening which is the first step in mRNA decay. The

Target Details

gene is part of a small gene family including three protein-coding genes and several pseudogenes.

Molecular Weight: 71 kDa

UniProt: [P11940](#)

Pathways: [SARS-CoV-2 Protein Interactome](#)

Application Details

Application Notes: WB 1:200-1:1000

Restrictions: For Research Use only

Handling

Format: Liquid

Concentration: 0.6 mg/mL

Buffer: PBS with 0.05 % sodium azide and 50 % glycerol, PH7.4

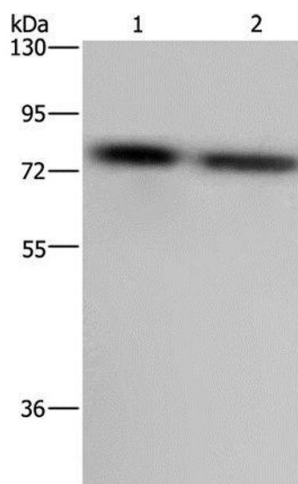
Preservative: Sodium azide

Precaution of Use: This product contains Sodium azide: a POISONOUS AND HAZARDOUS SUBSTANCE which should be handled by trained staff only.

Storage: -20 °C

Storage Comment: Store at -20°C. Avoid freeze / thaw cycles.

Images



Western Blotting

Image 1. Western Blot analysis of LoVo and Hela cell using PABPC1 Polyclonal Antibody at dilution of 1:500