

Datasheet for ABIN7237407

**anti-MLF1IP antibody****2** Images[Go to Product page](#)

## Overview

Quantity:	200 µL
Target:	MLF1IP
Reactivity:	Human
Host:	Rabbit
Clonality:	Polyclonal
Conjugate:	This MLF1IP antibody is un-conjugated
Application:	ELISA, Immunohistochemistry (IHC)

## Product Details

Immunogen:	Recombinant protein of human CENPU
Isotype:	IgG
Characteristics:	Polyclonal Antibody
Purification:	Affinity purification

## Target Details

Target:	MLF1IP
Alternative Name:	CENPU ( <a href="#">MLF1IP Products</a> )
Background:	The centromere is a specialized chromatin domain, present throughout the cell cycle, that acts as a platform on which the transient assembly of the kinetochore occurs during mitosis. All active centromeres are characterized by the presence of long arrays of nucleosomes in which CENPA (MIM 117139) replaces histone H3 (see MIM 601128). MLF1IP, or CENPU, is an

## Target Details

additional factor required for centromere assembly.

UniProt: [Q71F23](#)

## Application Details

Application Notes: IHC 1:50-1:200

Restrictions: For Research Use only

## Handling

Format: Liquid

Concentration: 0.3 mg/mL

Buffer: PBS with 0.05 % sodium azide and 50 % glycerol, PH7.4

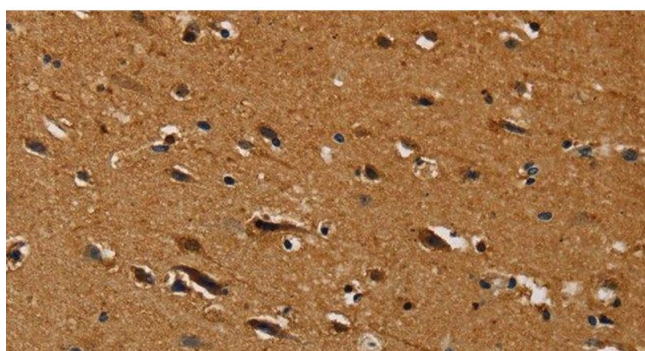
Preservative: Sodium azide

Precaution of Use: This product contains Sodium azide: a POISONOUS AND HAZARDOUS SUBSTANCE which should be handled by trained staff only.

Storage: -20 °C

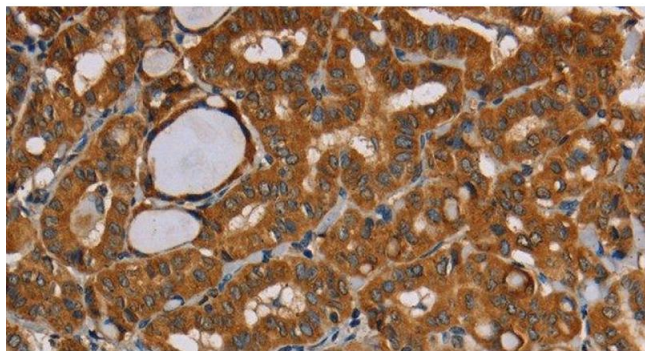
Storage Comment: Store at -20°C. Avoid freeze / thaw cycles.

## Images



### Immunohistochemistry (Paraffin-embedded Sections)

**Image 1.** Immunohistochemistry of paraffin-embedded Human brain tissue using CENPU Polyclonal Antibody at dilution 1:30



#### Immunohistochemistry (Paraffin-embedded Sections)

**Image 2.** Immunohistochemistry of paraffin-embedded Human thyroid cancer tissue using CENPU Polyclonal Antibody at dilution 1:30