

Datasheet for ABIN7237431

anti-MTF2 antibody[Go to Product page](#)**1** Image

Overview

Quantity:	200 µL
Target:	MTF2
Reactivity:	Human, Mouse
Host:	Rabbit
Clonality:	Polyclonal
Conjugate:	This MTF2 antibody is un-conjugated
Application:	Western Blotting (WB), ELISA

Product Details

Immunogen:	Recombinant protein of human MTF2
Isotype:	IgG
Characteristics:	Polyclonal Antibody
Purification:	Affinity purification

Target Details

Target:	MTF2
Alternative Name:	MTF2 (MTF2 Products)
Background:	MTF2(MIER2(mesoderm induction early response 1, family member 2), also known as PCL2 or M96, is a protein that in humans is encoded by the MTF2 gene. It binds to the metal-regulating-element (MRE) of metallothionein gene promoter. May be involved in the activation of MT (metallothionein) genes in response to heavy-metal ions.

Target Details

Molecular Weight:	67 kDa
NCBI Accession:	NP_031384
UniProt:	Q9Y483
Pathways:	Stem Cell Maintenance

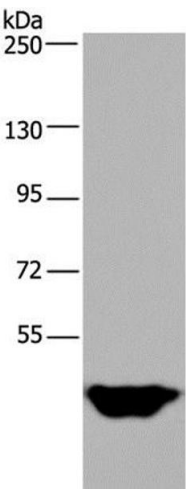
Application Details

Application Notes:	WB 1:500-1:2000
Restrictions:	For Research Use only

Handling

Format:	Liquid
Concentration:	0.3 mg/mL
Buffer:	PBS with 0.05 % sodium azide and 50 % glycerol, PH7.4
Preservative:	Sodium azide
Precaution of Use:	This product contains Sodium azide: a POISONOUS AND HAZARDOUS SUBSTANCE which should be handled by trained staff only.
Storage:	-20 °C
Storage Comment:	Store at -20°C. Avoid freeze / thaw cycles.

Images



Western Blotting

Image 1. Western Blot analysis of Human testis tissue using MTF2 Polyclonal Antibody at dilution of 1:400